

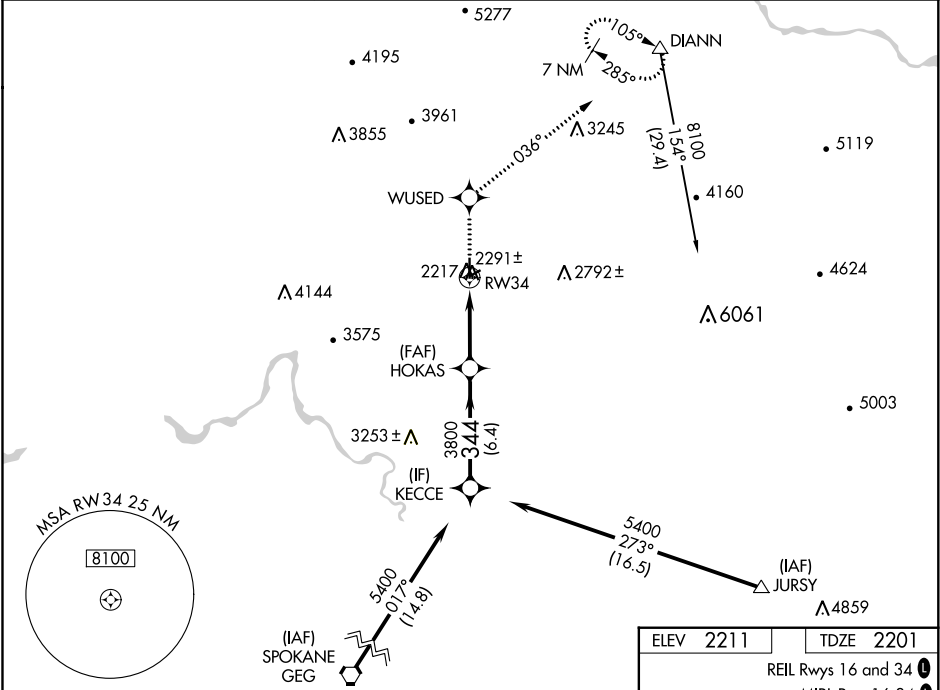
|  |                        |                             |   |
|--|------------------------|-----------------------------|---|
| WAAS<br>CH <b>61306</b><br><b>W34A</b> | APP CRS<br><b>344°</b> | Rwy Idg<br>TDZE<br>Apt Elev | <b>6100</b><br><b>2201</b><br><b>2211</b> |
|--|------------------------|-----------------------------|---|

RNAV (GPS) RWY 34

DEER PARK (DEW)

|   |   |
|---|---|
| <div><div>⚠</div><div>For uncompensated Baro-VNAV systems, LNAV/VNAV NA below -19°C (-2°F) or above 44°C (111°F). When local altimeter setting not received, use Spokane Intl altimeter setting and increase all DA/MDA 80 feet and all visibilities ¼ SM. Circling NA west of Rwy 16-34. DME/DME RNP-0.3 NA. VDP and Baro-VNAV NA when using Spokane Intl altimeter setting.</div></div> | MISSED APPROACH: Climb to 8100 direct WUSED and via 036° track to DIANN and hold, continue climb-in-hold to 8100. |
|---|---|

|                        |   |  |
|------------------------|---|--|
| ASOS<br><b>135.175</b> | SPOKANE APP CON<br><b>123.75 282.25</b> | UNICOM<br><b>123.0</b> (CTAF) <b>0</b> |
|------------------------|---|--|



|   |   |   |   |   |
|---|---|---|---|---|
| 8100  | WUSED                                   | 036° tr                                 | DIANN                                   | KECCE                                   |
| <div><div>↑</div><div>8100</div></div>                      | <div><div>✦</div><div>WUSED</div></div> | <div><div>036°</div><div>tr</div></div> | <div><div>△</div><div>DIANN</div></div> | <div><div>✦</div><div>KECCE</div></div> |
| *LNAV only  | *1.2 NM to RW34                         |   |   |   |
| <div><div>1.2</div><div>3.7 NM</div><div>6.4 NM</div></div> |   |   |   |   |
| CATEGORY  | A                                       | B                                       | C                                       | D                                       |
| LPV DA  | 2466-1                                  | 265 (300-1)                             |   |   |
| LNAV/VNAV DA  | 2551-1¼                                 | 350 (400-1¼)                            |   |   |
| LNAV MDA  | 2600-1                                  | 399 (400-1)                             | 2600-1¼                                 | 399 (400-1¼)                            |
| CIRCLING  | 2700-1                                  | 489 (500-1)                             | 2700-1½                                 | 2860-2                                  |
|   |   |   | 489 (500-1½)                            | 649 (700-2)                             |

