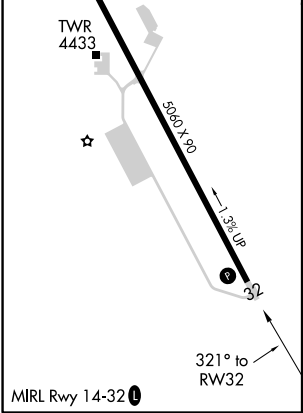
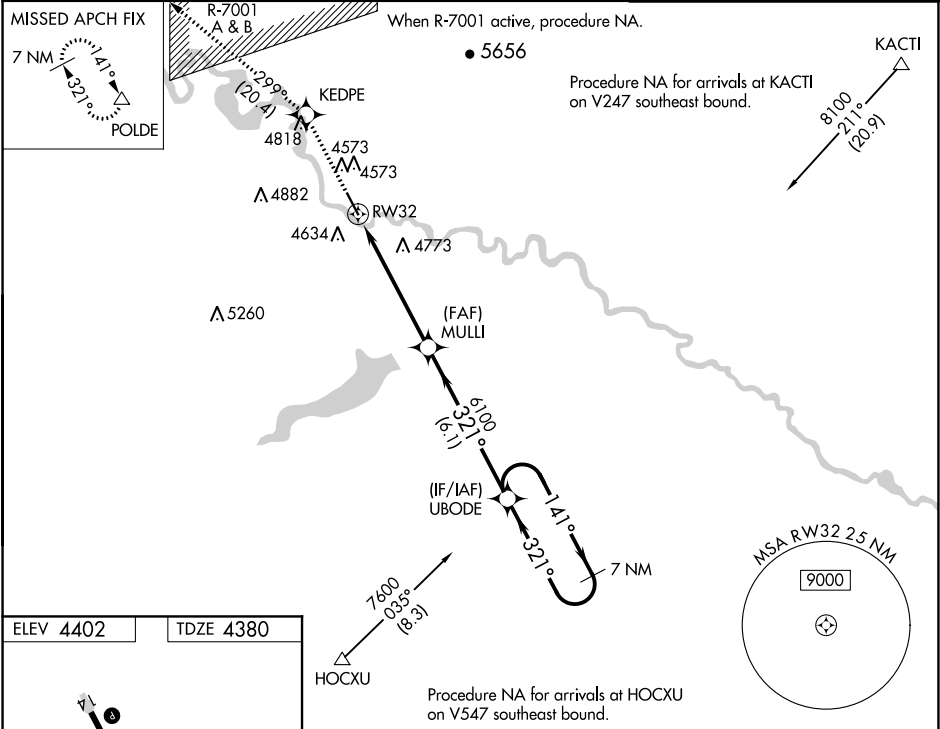


WAAS CH 69426 W32A	APP CRS 321°	Rwy Idg TDZE Apt Elev	5060 4380 4402
--	------------------------	-----------------------------	---

RNAV (GPS) RWY 32
CAMP GUERNSEY (GUR)

<p>⚠ DME/DME RNP-0.3 NA. When local altimeter setting not received, use Torrington altimeter setting and increase all MDA 100 feet and increase LP Cat B and Circling Cat B visibility ¼ mile and all Cat C and D visibility ½ mile. Helicopter visibility reduction below ¾ SM NA. When Rwy 32 VGSI inop, Straight-In and Circling minimums NA at night. When Rwy 14 VGSI inop, Circling to Rwy 14 NA at night.</p>	<p>MISSED APPROACH: Climb to 9000 direct KEDPE and on track 299° to POLDE and hold.</p>
---	--

ATIS 119.825	DENVER CENTER 135.6 363.025	GUERNSEY TOWER* 126.2 (CTAF) 0 233.3
------------------------	---------------------------------------	--



9000	KEDPE	tr 299°	POLDE	UBODE	7 NM Holding Pattern
Visual Segment - Obstacles.		MULLI			
RW32		6100		141° → 6900	
5.4 NM		6.1 NM			
CATEGORY	A	B	C	D	
LP MDA	5040-1	660 (700-1)	5040-2	660 (700-2)	
LNAV MDA	5080-1 700 (700-1)	5080-1¼ 700 (700-1¼)	5080-2	700 (700-2)	
CIRCLING	5200-1 798 (800-1)	5200-1¼ 798 (800-1¼)	5260-2½ 858 (900-2½)	5560-3 1158 (1200-3)	

NW-1, 31 DEC 2020 to 28 JAN 2021

NW-1, 31 DEC 2020 to 28 JAN 2021