

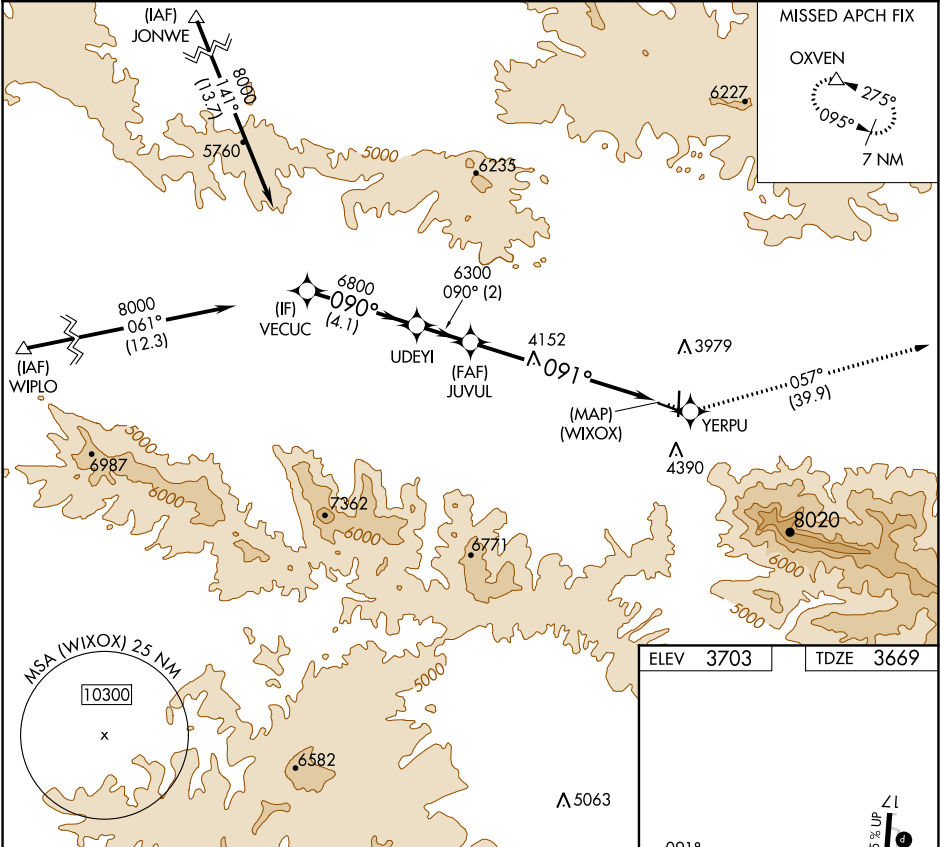
WAAS CH <b>73010</b> <b>W09A</b>	APP CRS <b>091°</b>	Rwy Idg TDZE <b>3669</b> Apt Elev <b>3703</b>
--	------------------------	---

RNAV (GPS) Z RWY 9

GRANT COUNTY RGNL/OGILVIE FIELD (GCD)

<div><div>▼</div><div>When local altimeter setting not received, procedure NA. DME/DME RNP-0.3 NA. Helicopter visibility reduction below ¾ SM NA.</div></div>	MISSED APPROACH: Climb to 12000 direct YERPU and on track 057° to OXVEN and hold, continue climb-in-hold to 12000.
---	--

AWOS-3 <b>118.375</b>	SEATTLE CENTER <b>128.15 257.75</b>	UNICOM <b>122.8 (CTAF) 0</b>
--------------------------	--	---------------------------------



VEUCUC		UDEYI		JUVUL		12000		YERPU		tr 057°		OXVEN	
8000		6800		6300									
GP 3.40° TCH 54													
		4.1 NM		2 NM		7.1 NM							
CATEGORY		A		B		C		D					
LPV DA		4269-2		600 (600-2)				NA					

VGSI and RNAV glidepath not coincident  
(VGSI Angle 3.00/TCH 45)

(WIXOX)

4471 X 60  
1.1 % Up

3707

5220 X 60

35

27

091°

090°

091°

REIL Rwy 17 and 9

MIRL Rwy 9-27 and 17-35