

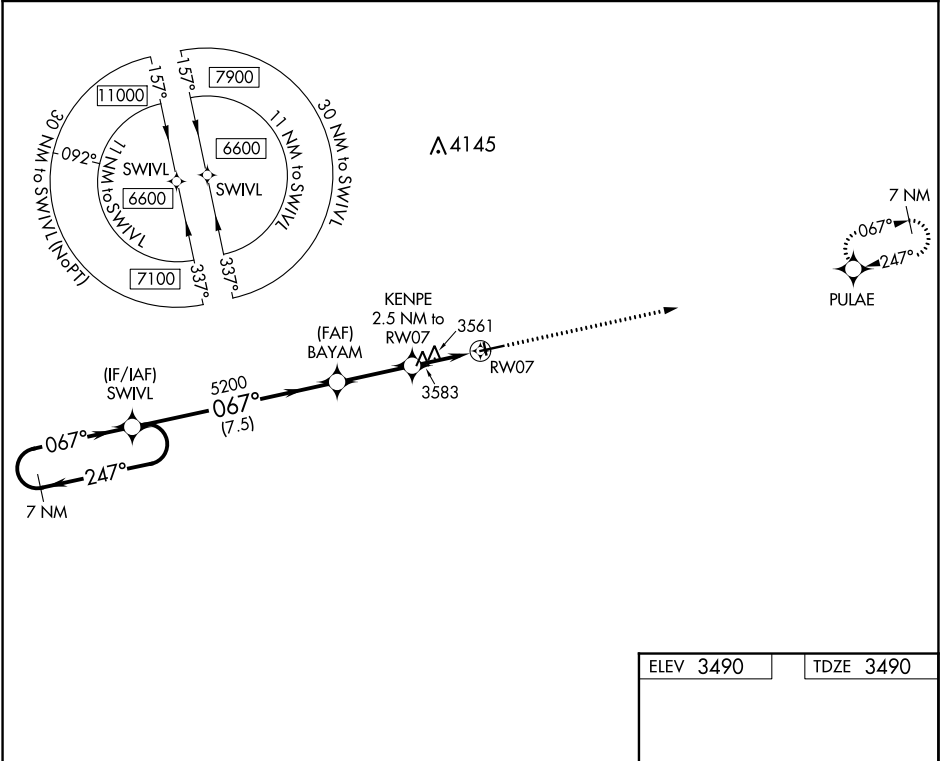
WAAS CH 56529 W07A	APP CRS 067°	Rwy Idg TDZE 3490 Apt Elev 3490
----------------------------------------	------------------------	-----------------------------------------------------

RNAV (GPS) RWY 7
ROUNDUP (RPX)

▼ Use Billings altimeter setting, when not received, procedure NA.
▲ NA When VGSi inop, Straight-in/Circling Rwy 7 procedure NA at night.
DME/DME RNP-0.3 NA. Visibility reduction by helicopters NA.

MISSED APPROACH: Climb to 6300 direct PULAE and hold.

BIL ASOS 126.3	SALT LAKE CENTER 126.85 305.2	UNICOM 122.8 (CTAF)	122.7 0
--------------------------	-----------------------------------------	-------------------------------	-----------------------



7 NM Holding Pattern		VGSI and descent angles not coincident (VGSI Angle 4.00/TCH 43).		6300	PULAE
6600		5200		4320	RW07
7.5 NM		2.7 NM	2.5 NM		
CATEGORY	A	B	C	D	
LP MDA	3940-1	450 (500-1)	3940-1 $\frac{3}{8}$	450 (500-1 $\frac{3}{8}$)	
LNAV MDA	3960-1	470 (500-1)	3960-1 $\frac{3}{8}$	470 (500-1 $\frac{3}{8}$)	
CIRCLING	4000-1	510 (600-1)	4000-1 $\frac{1}{2}$	4040-2	
			510 (600-1 $\frac{1}{2}$)	550 (600-2)	

MIRL Rwy 7-25 **0**

6300 X 100
5099 X 75
0.8% UP
0.7% UP

NW-1, 31 DEC 2020 to 28 JAN 2021

NW-1, 31 DEC 2020 to 28 JAN 2021