

WAAS
CH **93840**
W17A

APP CRS
173°

Rwy Idg
TDZE **4789**
Apt Elev **4789**

RNAV (GPS) RWY 17

RUBY VALLEY FIELD (RVF)

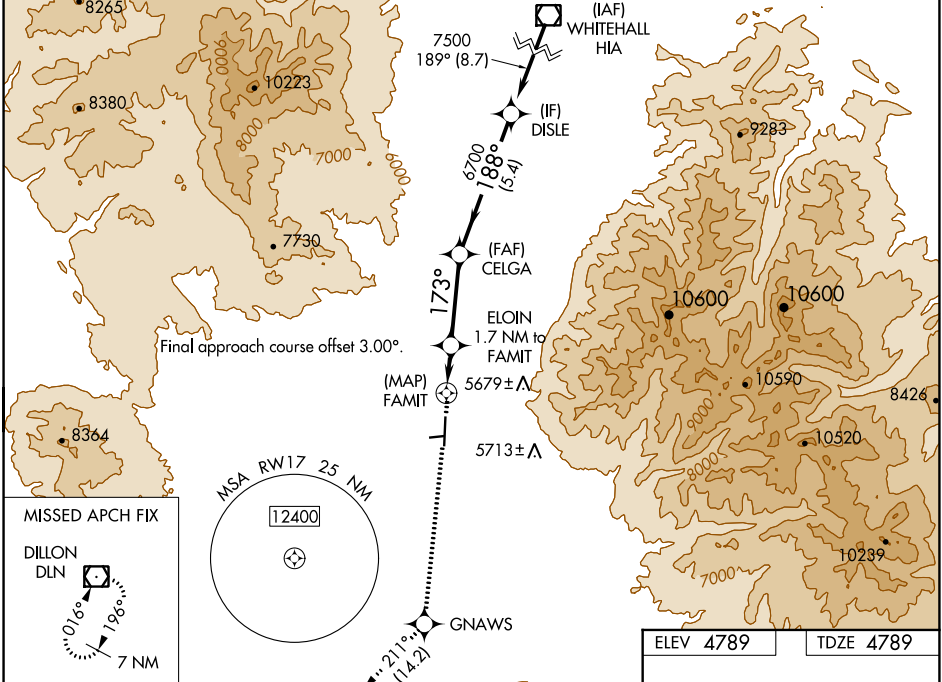
RNP APCH.

⚠

Circling NA to Rwy 7 and 25. Circling NA east of Rwy 17-35.
Rwy 17 helicopter visibility reduction below ¾ SM NA. Baro-VNAV NA.

MISSED APPROACH: Climb to 11100 direct GNAWS and on track 211° to DLN VOR/DME and hold, continue climb-in-hold to 11100.

AWOS-3PT 119.025	SALT LAKE CENTER 132.4 338.3	CTAF 122.90
----------------------------	--	-----------------------



11100 GNAWS

DLN

tr 211°

VGSI and RNAV glidepath not coincident (VGSI Angle 3.00/TCH 28).

*LNAV only.

ELOIN 1.7 NM to FAMIT

*1.1 NM to FAMIT

FAMIT

CELGA

DISLE

GP 3.00° TCH 45

CATEGORY	A	B	C	D
LPV DA	5174-1½ 385 (400-1½)			
LNAV/VNAV DA	5579-2½ 790 (800-2½)			
LNAV MDA	5440-1½ 651 (700-1½)	5440-1½ 651 (700-1½)		
CIRCLING	5440-1¼ 651 (700-1¼)	5480-2 691 (700-2)	5620-2¾ 831 (900-2¾)	

ELEV 4789

TDZE 4789

2.0% UP

2866 X 100

0.5% UP

35

MIRL Rwy 17-35