

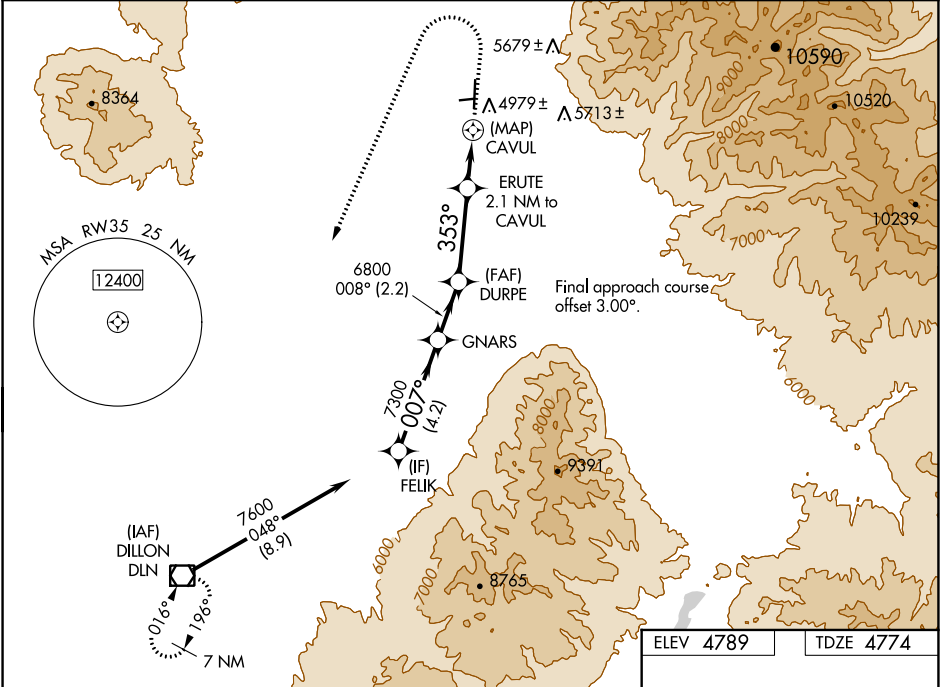
WAAS CH 42940 W35A	APP CRS 353°	Rwy Idg TDZE 4774 Apt Elev 4789
--	------------------------	---

RNAV (GPS) RWY 35

RUBY VALLEY FIELD (RVF)

RNP APCH.	MISSED APPROACH: (Do not exceed 185K until DLN VOR/DME) Climb to 5500 then climbing left turn to 11100 direct DLN VOR/DME and hold, continue climb-in-hold to 11100.
<div><div></div><div></div></div> <div>Circling NA to Rws 7 and 25. Circling NA east of Rwy 17-35. For uncompensated Baro-VNAV systems, LNAV/VNAV NA below -24°C or above 54°C.</div>	

AWOS-3PT 119.025	SALT LAKE CENTER 132.4 338.3	CTAF 122.90
----------------------------	--	-----------------------



VGSI and RNAV glidepath not coincident (VGSI Angle 3.00/TCH 38).		5500	11100	DLN
FELIX		GNARS	DURPE	ERUTE
7600		7300	6800	5720
GP 3.00°		007°	008°	353°
TCH 45		4.2 NM	2.2 NM	3.4 NM
				1.2 NM
				0.9 NM
				0.8 NM
CATEGORY	A	B	C	D
LPV DA	5120-1		346 (400-1)	
LNAV/VNAV DA	5270-1 $\frac{3}{8}$		496 (500-1 $\frac{1}{2}$)	
LNAV MDA	5340-1		566 (600-1)	
	5400-1		5480-2	
	611 (700-1)		691 (700-2)	
	5440-1		5620-2 $\frac{3}{4}$	
	651 (700-1)		831 (900-2 $\frac{3}{4}$)	
CIRCLING	5400-1		5620-2 $\frac{3}{4}$	
	611 (700-1)		831 (900-2 $\frac{3}{4}$)	

MIRL Rwy 17-35