

WAAS CH 97729 W12A	APP CRS 122°	Rwy Idg TDZE Apt Elev	3900 2252 2264
--	------------------------	-----------------------------	---

RNAV (GPS) RWY 12

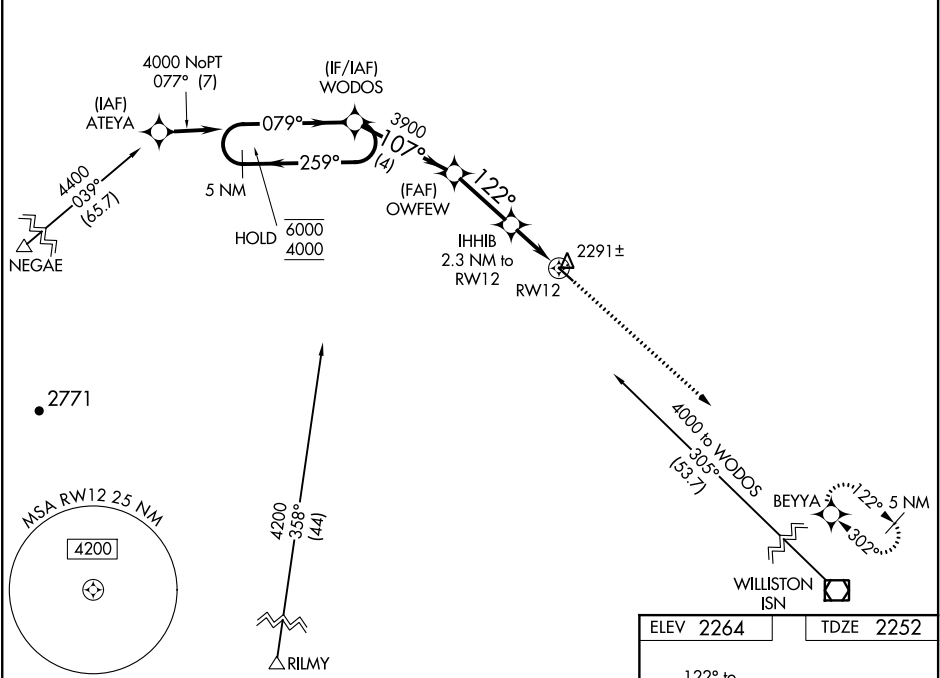
SHER-WOOD (PWD)

RNP APCH.

Circling Rwy 8, 26 NA at night. For uncompensated Baro-VNAV systems, LNAV/VNAV NA below -19°C or above 54°C. When local altimeter setting not received, use Williston altimeter setting.

MISSED APPROACH: Climb to 5000 direct BEYYA and hold.

AWOS-3 135.025	SALT LAKE CENTER 126.85 305.2	UNICOM 122.8 (CTAF) 0
--------------------------	---	---------------------------------



5 NM Holding Pattern		WODOS		OWFEW		IHHIB 2.3 NM to RWY 12		5000	BEYYA
6000 ← 259°		4000 → 079°		3900		107°		122°	
GP 3.00°		TCH 44		4 NM		2.7 NM		1.2 NM	
1.1 NM		1.1 NM		1.1 NM		1.1 NM		1.1 NM	
CATEGORY		A		B		C		D	
LPV DA		2567-7/8		315 (400-7/8)					
LNAV/VNAV DA		2617-1		365 (400-1)					
LNAV MDA		2660-1		408 (400-1)		2660-1 1/8		408 (400-1 1/8)	
CIRCLING		2780-1		516 (600-1)		2880-1 3/4		3100-2 3/4	
						616 (700-1 3/4)		836 (900-2 3/4)	

