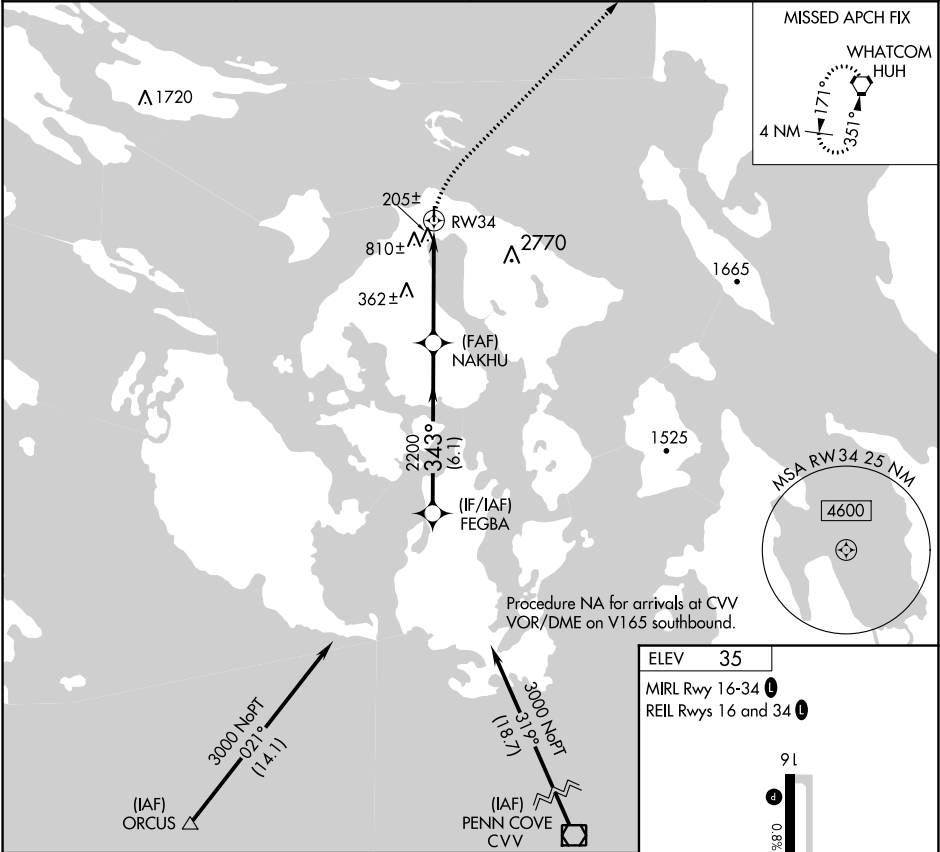


APP CRS 343°	Rwy Idg TDZE Apt Elev N/A N/A 35	RNAV (GPS)-A ORCAS ISLAND (ORS)
------------------------	--	---

▼ DME/DME RNP-0.3 NA. Helicopter visibility reduction below 1 SM NA. ▲ When local altimeter setting not received, use Friday Harbor altimeter setting and increase MDA 40 feet. Night landing: Rwy 34 NA.	MISSED APPROACH: Climbing right turn to 2000 direct HUH VORTAC and hold.
--	---

AWOS-3 135.425	WHIDBEY APP CON 118.2 285.65 (SOUTH)	VICTORIA APP CON 132.7 290.8 (NORTH)	CTAF 128.25 0
--------------------------	--	--	-------------------------



FEGBA	VGSI and descent angles not coincident (VGSI Angle 4.00/TCH 26).	2000	HUH
3000	NAKHU	2200	RW34
343°	4.56°	TCH 40	
6.1 NM	4.4 NM		
CATEGORY	A	B	C
CIRCLING	1120-1¼ 1085 (1100-1¼)	1820-1½ 1785 (1800-1½)	NA