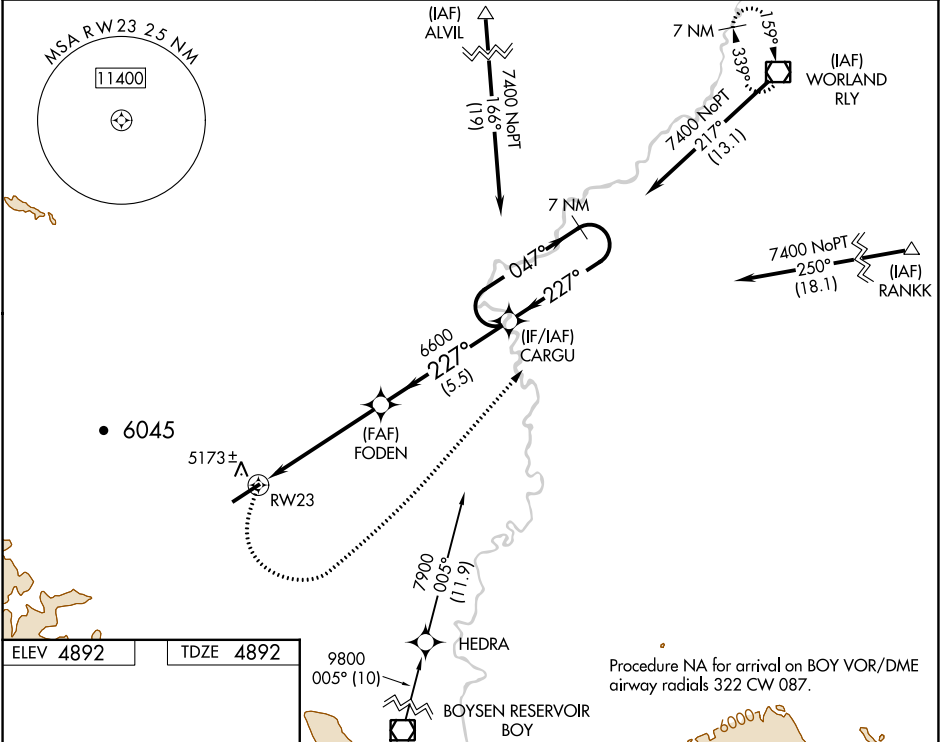


WAAS CH 53340 W23A	APP CRS 227°	Rwy Idg TDZE 4892 Apt Elev 4892
--	------------------------	---

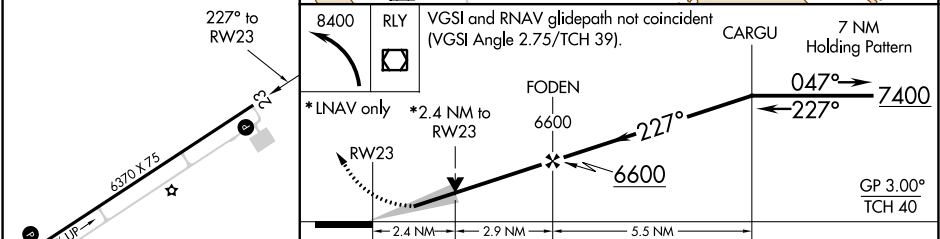
RNAV (GPS) RWY 23
HOT SPRINGS COUNTY (HSG)

-36°C	For uncompensated Baro-VNAV systems, LNAV/VNAV NA below -24°C (-11°F) or above 54°C (130°F). Circling NA northwest of Rwy 5-23. DME/DME RNP-0.3 NA.	MISSED APPROACH: Climbing left turn to 8400 direct RLY VOR/DME and hold.
-------	---	---

AWOS-3PT 121.125	SALT LAKE CENTER 133.25 285.6	UNICOM 122.8 (CTAF) 1
----------------------------	---	---------------------------------



ELEV 4892	TDZE 4892
-----------	-----------



CATEGORY	A	B	C	D
LPV DA	5382-1¾	490 (500-1¾)		
LNAV/VNAV DA	5577-2½	685 (700-2½)		
LNAV MDA	5620-1 728 (800-1)	5620-2 728 (800-2)		
CIRCLING	5620-1 728 (800-1)	5620-2 728 (800-2)	5880-3 988 (1000-3)	