

DEPARTURE ROUTE DESCRIPTION

Turn right/left to heading assigned by the Tower, expect vectors to KEOLA INT, maintain 5000'; then via transitions. Expect clearance to enroute altitude/flight level at KEOLA INT.

KATHS TRANSITION (KEOLA2.KATHS): From over KEOLA via HNL R-258 and SOK R-234 to KATHS INT.

LIHUE TRANSITION (KEOLA2.LIHUE): From over KEOLA via SOK R-111 and LIH R-148 to LIH VORTAC.

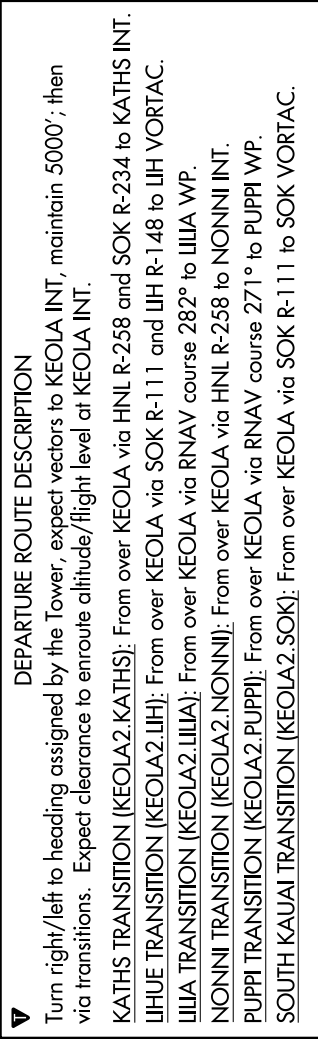
LIILIA TRANSITION (KEOLA2.LIILIA): From over KEOLA via RNAV course 282° to LIILIA WP.

NONNI TRANSITION (KEOLA2.NONNI): From over KEOLA via HNL R-258 to NONNI INT.

PUPPI TRANSITION (KEOLA2.PUPPI): From over KEOLA via RNAV course 271° to PUPPI WP.

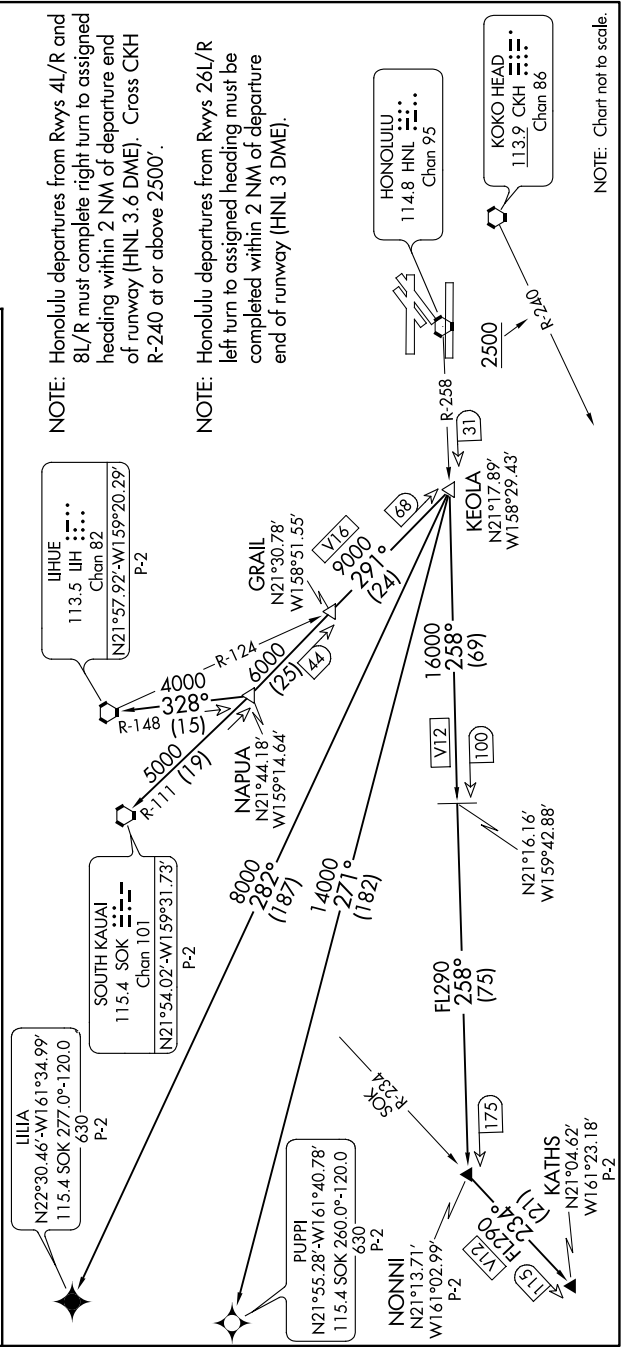
SOUTH KAUAI TRANSITION (KEOLA2.SOK): From over KEOLA via SOK R-111 to SOK VORTAC.

D-ATIS	
127.9	251.15
CINC DEL	
121.4	281.4
GND CON	
121.9	348.6
HONOLULU TOWER	
118.1	257.8
123.9	273.575 (Rwy 8R/26L)
HCF APPROACH	
118.3	269.0



NOTE: Honolulu departures from Rwy 4L/R and 8L/R must complete right turn to assigned heading within 2 NM of departure end of runway (HNL 3.6 DME). Cross CKH R-240 at or above 2500'.

NOTE: Honolulu departures from Rwy 26L/R left turn to assigned heading must be completed within 2 NM of departure end of runway (HNL 3 DME).



NOTE: Chart not to scale.