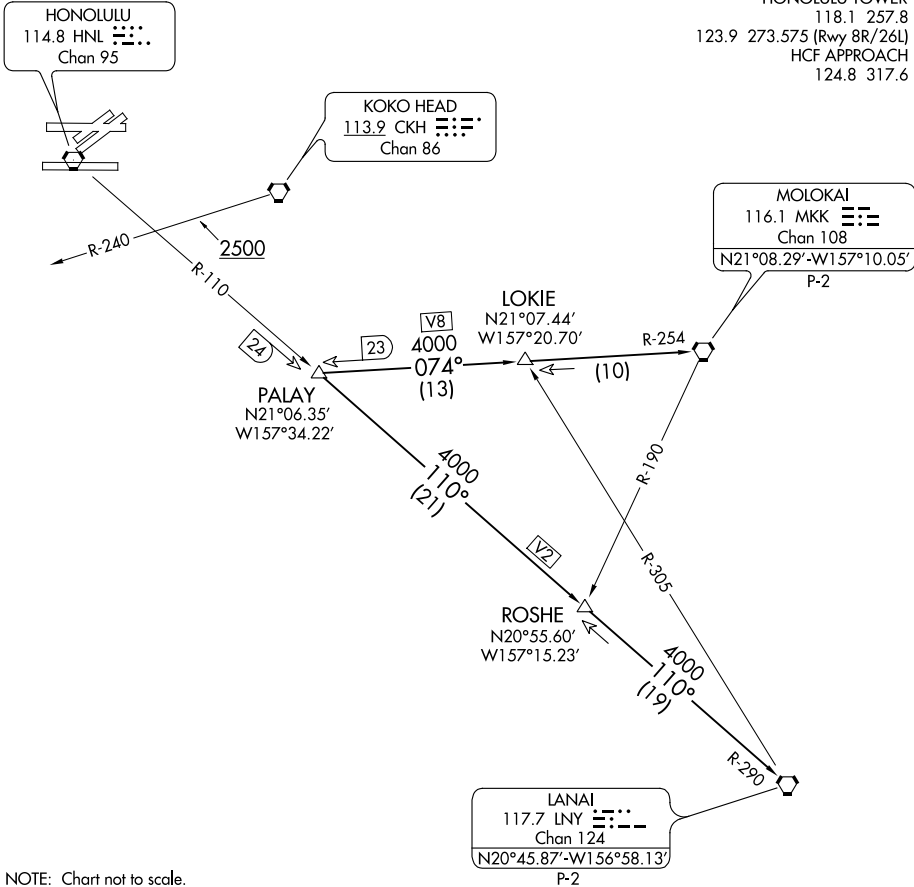


NOTE: Departures from Runways 4L/R and 8L/R must complete right turn to assigned heading within 2 NM of runway departure end (HNL 3.6 DME).  
Cross CKH R-240 at or above 2500'.  
Departures from Runways 26L/R must complete left turn to assigned heading within 2 NM of runway departure end (HNL 3 DME).

D-ATIS  
127.9 251.15  
CLNC DEL  
121.4 281.4  
GND CON  
121.9 348.6  
HONOLULU TOWER  
118.1 257.8  
123.9 273.575 (Rwy 8R/26L)  
HCF APPROACH  
124.8 317.6



DEPARTURE ROUTE DESCRIPTION

Turn right/left to heading as assigned by tower, expect vectors to PALAY INT, maintain 5000'; then via (transition). Expect clearance to enroute altitude/flight level at LNY VORTAC.

- LANAI TRANSITION (PALAY2.LNY): From over PALAY INT via HNL R-110 and LNY R-290 to LNY VORTAC.
- MOLOKAI TRANSITION (PALAY2.MKK): From over PALAY INT via MKK R-254 to MKK VORTAC.