


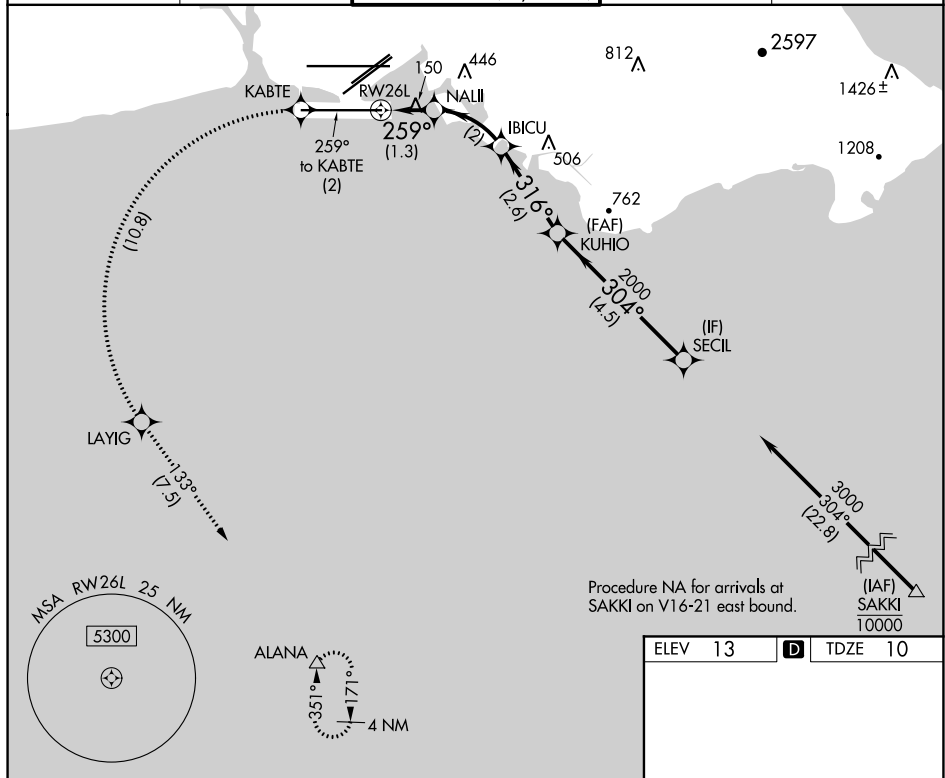


APP CRS	Rwy Idg	12000
259°	TDZE	10
	Apt Elev	13

RNAV (RNP) RWY 26L
DANIEL K INOUE INTL (HNL) (PHNL)

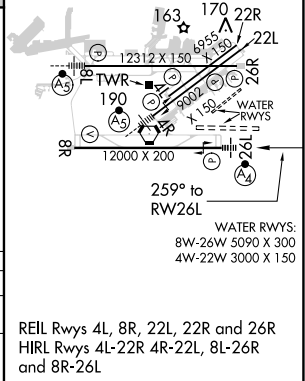
RNP AR APCH, RF required.			MISSED APPROACH: Climb to 3000 on track 259° to KABTE, left turn to IAYIG, then track 133° to ALANA and hold. Missed approach requires minimum climb of 234 feet per NM to 300.
	For uncompensated Baro-VNAV systems, procedure NA		
	below 15°C (58°F) or above 53°C (128°F).		

D-ATIS 127.9 251.15	HCF APPROACH 118.3 269.0	HONOLULU TOWER 118.1 257.8 123.9 273.575 (Rwy 8R/26L)	GND CON 121.9 348.6	CLNC DEL 121.4 281.4
-------------------------------	------------------------------------	---	-------------------------------	--------------------------------



3000 ↑ tr 259°	KABTE ✧	LAYIG ✧	tr 133° △	ALANA △	KUHIO	SECIL
CATEGORY	A	B		C		D
RNP 0.15 DA	260~3/4		250 (300~3/4)			
AUTHORIZATION REQUIRED						

AUTHORIZATION REQUIRED



PAC, 31 DEC 2020 to 25 FEB 2021