

APP CRS	Rwy Idg	8950
042°	TDZE	9
	Apt Elev	13

RNAV (GPS) Y RWY 4R

DANIEL K INOUEY INTL (HNL) (PHNL)

RNP APCH.

▼

⚠

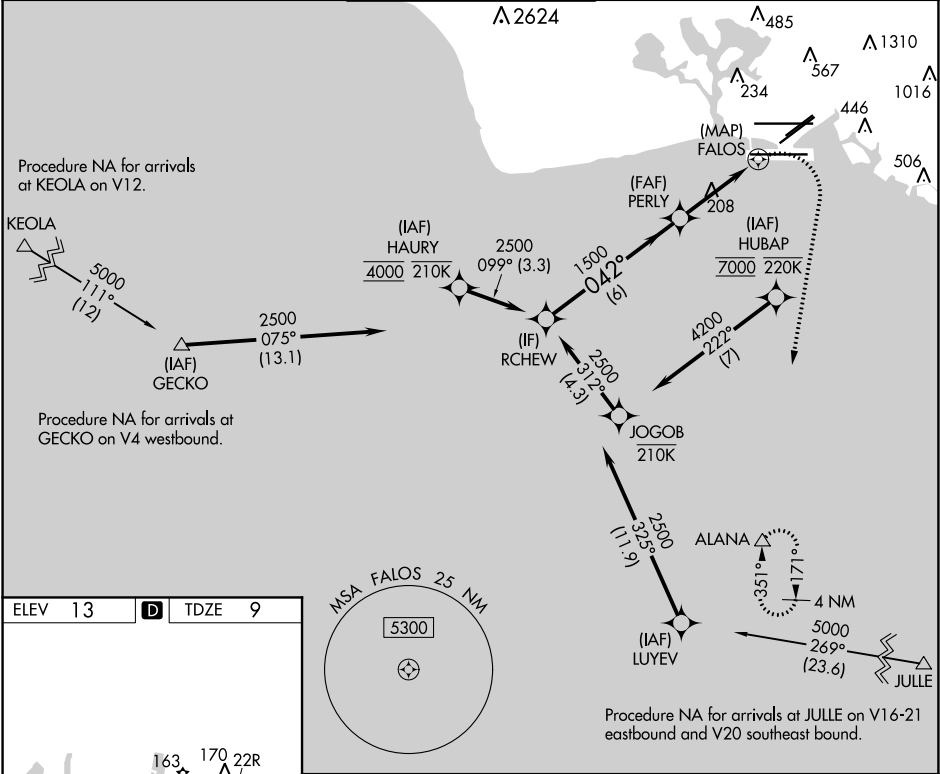
Circling Rwy 22R NA at night. Circling NA for Cats A and B northwest of Rwy 8L and 22R. Circling NA for Cats C and D north of Rwy 8L-26R. For inop ALS, increase LNAV Cat E visibility to 2 SM. Circling NA to sea lanes 4W, 8W, 22W, and 26W. HUBAP transition NA for Cat E aircraft. HAURY transition NA for Cat E aircraft.

MALSR

MISSED APPROACH:

Climbing right turn to 3000 direct ALANA and hold.

D-ATIS	HCF APPROACH	HONOLULU TOWER	GND CON	CLNC DEL
127.9 251.15	118.3 269.0	118.1 257.8 123.9 273.575 (Rwy 8R/26L)	121.9 348.6	121.4 281.4



ELEV 13

D

TDZE 9

REIL Rwy 4L, 8R, 22L, 22R and 26R

HIRL Rwy 4L-22R, 4R-22L, 8L-26R and 8R-26L

RCHEW

PERLY

FALOS

ALANA

2500

042°

1500

3.00°

TCH 55

1.3 NM to FALOS

6 NM

2.2 NM

1.3 NM

1 NM

VGSI and descent angles not coincident (VGSI Angle 3.00/TCH 71).

3000

ALANA

CATEGORY	A	B	C	D	E
LNAV MDA	460-3/4	451 (500-3/4)	460-7/8	451 (500-7/8)	760-1 1/8 751 (800-1 1/8)
CIRCLING	500-1 1/4 487 (500-1 1/4)	640-1 1/4 627 (700-1 1/4)	760-2 1/4 747 (800-2 1/4)	1260-3 1247 (1300-3)	NA