

SHLAE ONE ARRIVAL (RNAV)

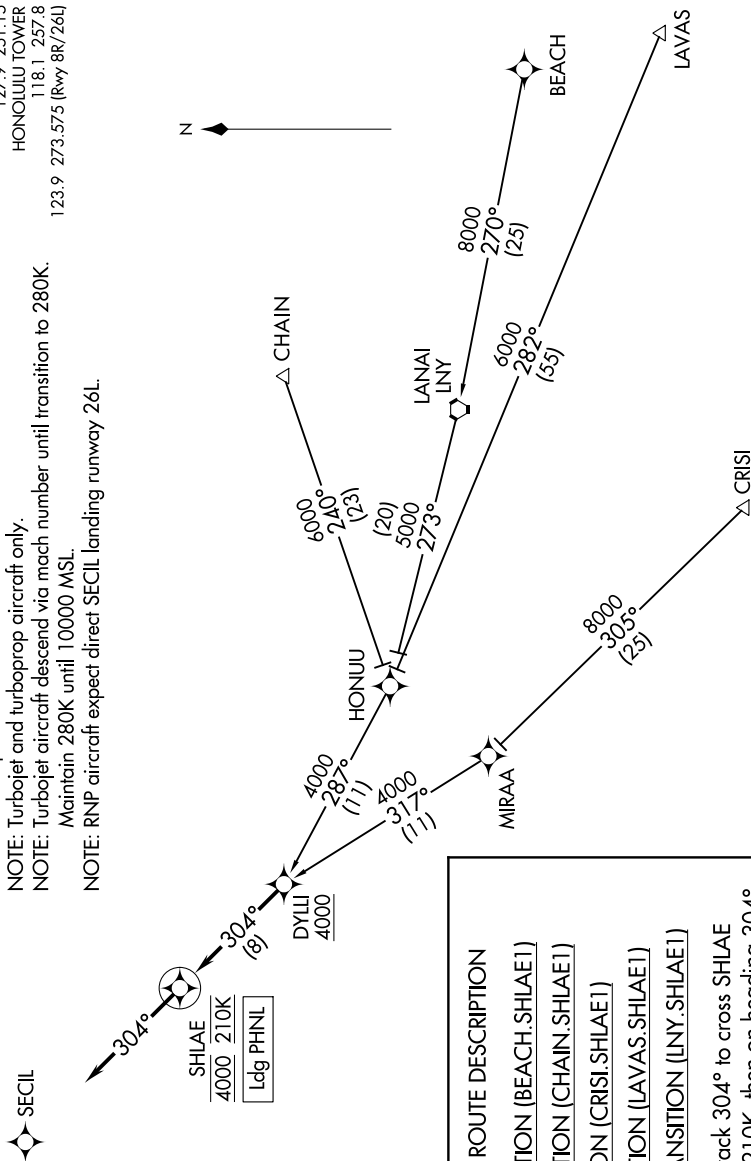
AL-754 (FAA)

DANIEL K INOUE INTL (HNL) (PHNL)
HONOLULU, HAWAII

NOTE: Chart not to scale.

PAC, 31 DEC 2020 to 25 FEB 2021

NOTE: RADAR required.	119.3	307.1	[CHAIN, BEACH, CRISI, HONUU, MIRAA, DYLU]	HCF CENTER
NOTE: RNAV 1.			126.0 278.3 [LAVAS]	
NOTE: GPS required.				D-ATIS
NOTE: Turbojet and turboprop aircraft only.				127.9 251.15
NOTE: Turbojet aircraft descend via mach number until transition to 280K.				HONOLULU TOWER
NOTE: Maintain 280K until 10000 MSL.				118.1 257.8
NOTE: RNP aircraft expect direct SECIL landing runway 26L.				123.9 273.575 (Rwy 8R/26L)



ARRIVAL ROUTE	DESCRIPTION
BEACH	TRANSITION (BEACH.SHLAE1)
CHAIN	TRANSITION (CHAIN.SHLAE1)
CRISI	TRANSITION (CRISI.SHLAE1)
LAVAS	TRANSITION (LAVAS.SHLAE1)
LINAL CITY	TRANSITION (LINAL CITY.SHLAE1)

From DYLL on track 304° to cross SHLAE at 4000 and at 210K, then on heading 304° or as assigned by ATC. Expect RADAR vectors to final approach course.

SHLAE ONE ARRIVAL (RNAV)
(DYLLI.SHLAE1) 30JAN20

HONOLULU, HAWAII
DANIEL K INOUE INTL (HNL) (PHNL)