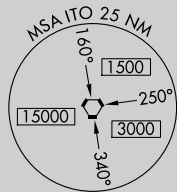


20254

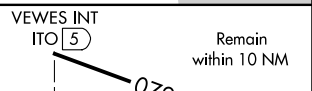
VOR/DME or TACAN RWY 26
HILO INTL (ITO) (PHTO)



GND CON
121.9



REIL Rwy 3
MIRL Rwy 3-21 **L**
HIRL Rwy 8-26 **L**



CATEGORY	A	B	C	D
S-26	460-3/4 422 (500-3/4)			460-1 422 (500-1)
C CIRCLING	500-1 462 (500-1)	540-1 502 (600-1)	840-2 1/4 802 (900-2 1/4)	1320-3 1282 (1300-3)

HILO INTL (ITO) (PHTO)

VOR/DME or TACAN RWY 26

PAC, 31 DEC 2020 to 25 FEB 2021