

NDB VYI	APP CRS	Rwy Idg	6995
327	005°	TDZE	54
		Apt Elev	54

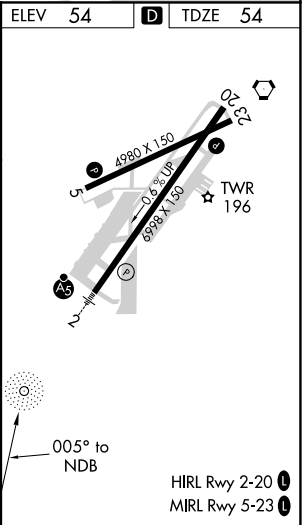
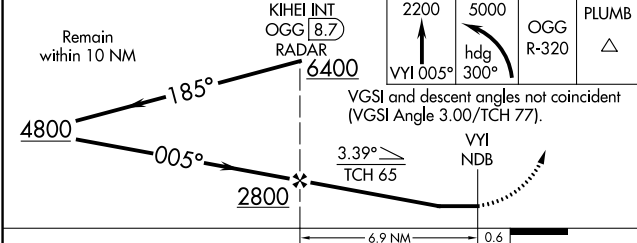
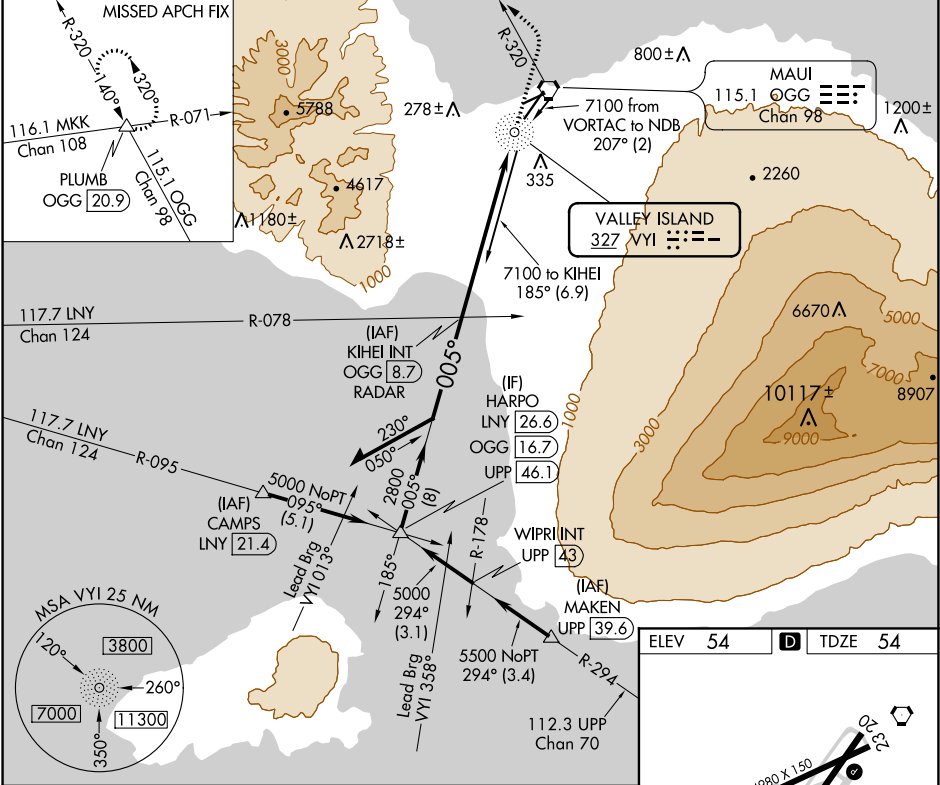
NDB RWY 2  
KAHALUI (OGG)(PHOG)

**⚠** Inoperative table does not apply to S-2 Cats C and D.

**MALSR**

MISSED APPROACH: Climb to 2200 on VYI NDB bearing 005° then climbing left turn to 5000 on heading 300° and OGG VORTAC R-320 to PLUMB/OGG 20.9 DME and hold, continue climb-in-hold to 5000.

ATIS 128.6	HCF APPROACH 120.2 322.4 (NORTH) 119.5 225.4 (SOUTH)	MAUI TOWER ★ 118.7 (CTAF) 0 279.6	GND CON 121.9 279.6	CLNC DEL 120.6 290.5	UNICOM 122.95
---------------	--	--------------------------------------	------------------------	-------------------------	------------------



CATEGORY	A	B	C	D
S-2	840-3/4 786 (800-3/4)	840-1 786 (800-1)	840-2 1/2 786 (800-2 1/2)	
CIRCLING	840-1 786 (800-1)	840-1 1/4 786 (800-1 1/4)	840-2 1/2 786 (800-2 1/2)	1180-3 1126 (1200-3)