

APP CRS	Rwy Idg	<b>6995</b>
<b>204°</b>	TDZE	<b>25</b>
	Apt Elev	<b>53</b>

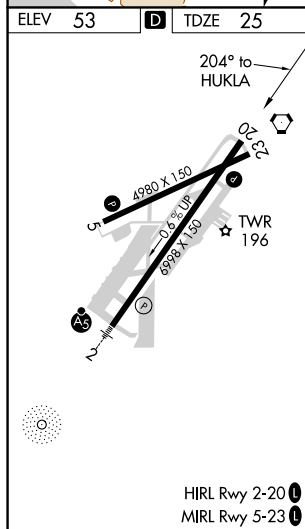
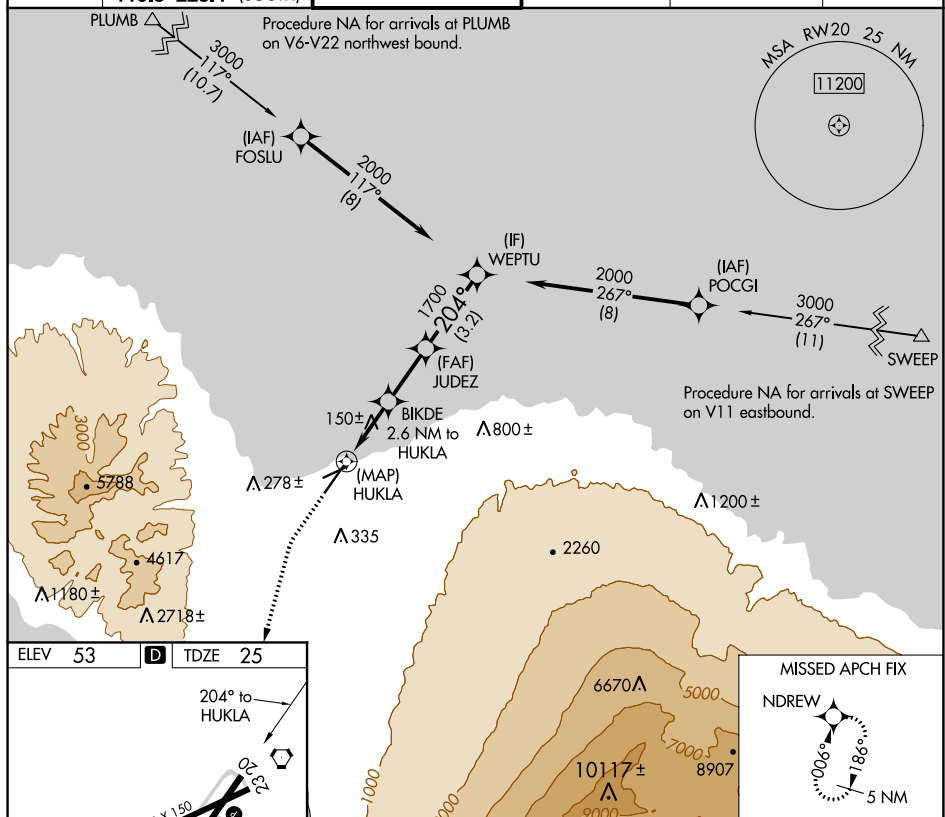
RNAV (GPS) RWY 20  
KAHULUI (OGG)(PHOG)

RNP APCH.

**T**  
**A** When local altimeter setting not received, procedure NA.

**MISSED APPROACH:** Climb to 500 then climbing left turn to 4300 direct NDREW and hold.

ATIS 128.6	HCF APPROACH 120.2 322.4 (NORTH) 119.5 225.4 (SOUTH)	MAUI TOWER* 118.7 (CTAF) 0 279.6	GND CON 121.9 279.6	CLNC DEL 120.6 290.5	UNICOM 122.95
---------------	--	-------------------------------------	------------------------	-------------------------	------------------



500 ↑	4300 ↘	NDREW ✦	VGSI and descent angles not coincident (VGSI Angle 3.00/TCH 76).			WEPTU
<p>BIKDE 2.6 NM to HUKLA JUDEZ 20° 2000 1700 3.00° TCH 55 940 0.8 NM to HUKLA HUKLA 0.2 0.8 1.8 NM 2.3 NM 3.2 NM</p>						
CATEGORY		A		B	C	D
LNAV MDA		400-1 375 (400-1)				
CIRCLING	500-1 447 (500-1)	620-1 567 (600-1)	740-2 687 (700-2)	1140-3 1087 (1100-3)		

PAC, 31 DEC 2020 to 25 FEB 2021