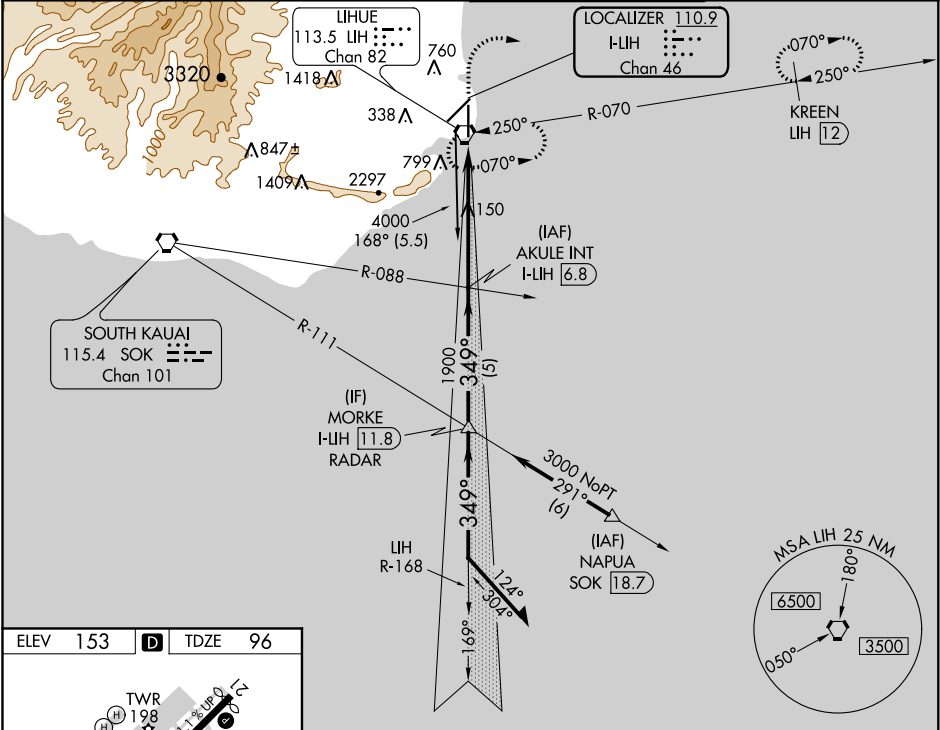


LOC/DME I-LIH	APP CRS	Rwy Idg	6500
110.9	349°	TDZE	96
Chan 46		Apt Elev	153

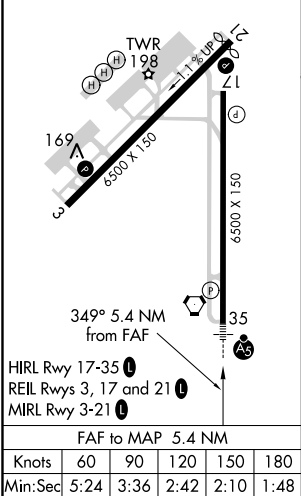
ILS or LOC RWY 35
LIHUE (LIH)(PHLI)

<p>▽ Circling NA at night. ▲ Circling NA west of Rwy 17-35. For inop ALS, increase S-LOC Cat D and E visibility to 1 mile.</p>	<p>MALSR</p>	<p>MISSED APPROACH: Climb to 600 then climbing right turn to 3000 on LIH VORTAC R-070. DME aircraft continue to KREEN/LIH 12 DME and hold. Non-DME aircraft continue climb to 4000 then right turn direct LIH VORTAC and hold east, left turn, 250° inbound.</p>
--	--------------	--

ATIS 127.2	HCF CENTER 126.5 269.4	LIHUE TOWER ★ 118.9(CTAF) 0 263.1	GND CON 121.9
---------------	---------------------------	--------------------------------------	------------------



ELEV 153	D	TDZE 96
----------	----------	---------



Remain within 1.5 NM		AKULE INT I-LIH 6.8	600	3000	DME: KREEN LIH 12	NON-DME: 4000	LIH
Use I-LIH DME when on the localizer course.		MORKE I-LIH 11.8 RADAR	3100	349°	* I-LIH 2.2	* I-LIH 1.4	* LOC only.
GS 3.00° TCH 55		3000	1900	5 NM	4.6 NM	0.8	
CATEGORY	A	B	C	D	E		
S-ILS 35	296-1/2 200 (200-1/2)						
S-LOC 35	400-1/2 304 (300-1/2)			400-3/4 304 (300-3/4)			
CIRCLING	520-1 367 (400-1)	620-1 467 (500-1)	620-1 1/2 467 (500-1 1/2)	720-2 567 (600-2)	NA		