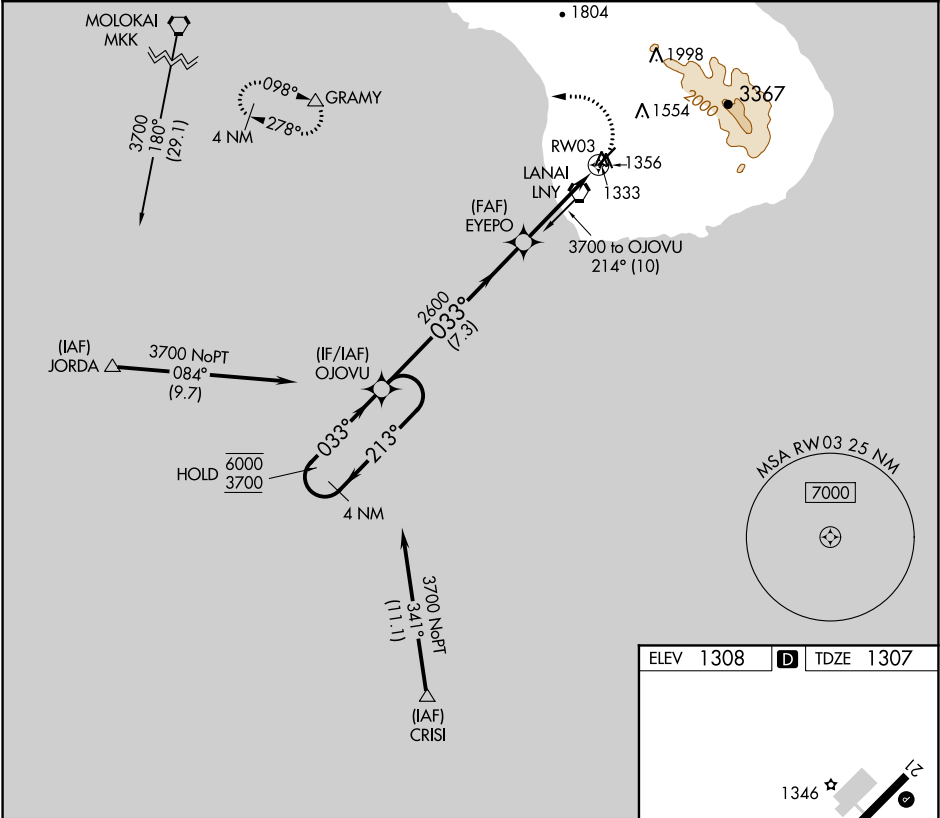


APP CRS	Rwy Idg	5000
033°	TDZE	1307
	Apt Elev	1308

RNAV (GPS) RWY 3  
LANAI (LNY)(PHNY)

RNP APCH.	MISSED APPROACH: Climbing left turn to 3300 direct GRAMY and hold.
▼ Circling Rwy 21 NA at night. When local altimeter setting not received, procedure NA, except for operators with approved weather reporting service.	

AWOS-3P 118.375	HCF CENTER 119.3 307.1	CTAF 122.9
--------------------	---------------------------	---------------



4 NM Holding Pattern		VGSI and descent angles not coincident (VGSI Angle 3.00/TCH 49).		3300 GRAMY
OJOVU		EYEPO		△
6000 ← 213°		033°		1.2 NM to RWY 03
3700 → 033°		2600		3.03° TCH 52
7.3 NM		2.7 NM		1.2 NM
CATEGORY	A	B	C	D
LNAV MDA	1720-1	413 (500-1)	1720-1¼	413 (500-1¼)
CIRCLING	1840-1 532 (600-1)	1880-1 572 (600-1)	1900-1½ 592 (600-1½)	1900-2 592 (600-2)

