


LOC/DME I-GUM	APP CRS	Rwy Idg	11014
110.3	063°	TDZE	256
Chan 40		Apt Elev	305

ILS or LOC RWY 6L  
GUAM INTL (GUM)(PGUM)

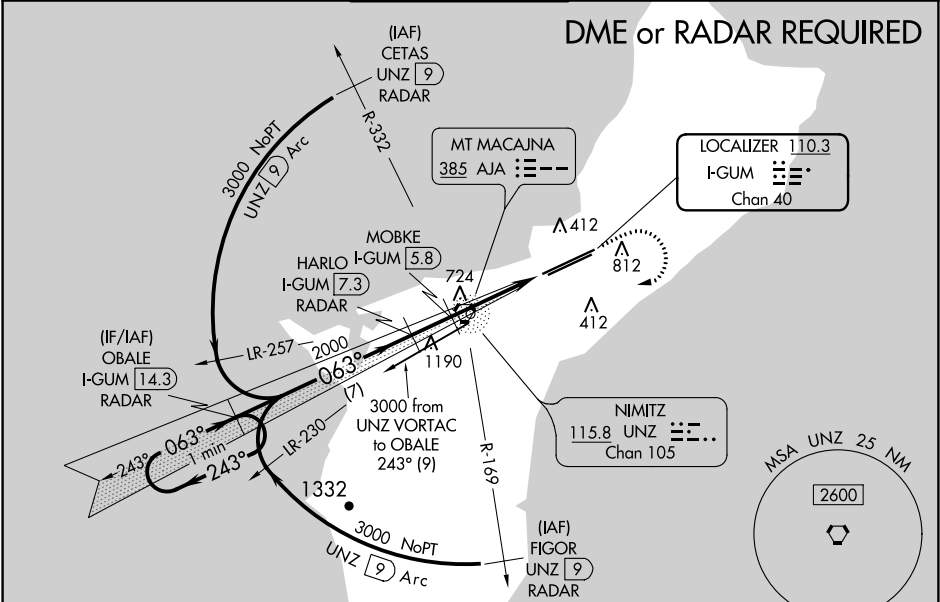
**▼** Circling NA southeast of Rwy 6R-24L. DME or RADAR required.  
**▲** For inop ALS, increase S-ILS 6L all Cats visibility to 1 SM; MOBKE DME minimums: For inop ALS, increase S-LOC 6L Cat A visibility to 1 SM. Inop table does not apply to S-LOC 6L Cats C and D.

MALSR




MISSED APPROACH: Climb to 2100 then climbing right turn to 3000 direct UNZ VORTAC then on I-GUM localizer SW course to OBALE/I-GUM 14.3 DME/RADAR and hold.

ATIS 119.0	GUAM CERAP 119.8 269.0	AGANA TOWER 118.1 340.2	GND CON 121.9 336.4	CLNC DEL 121.9
---------------	---------------------------	----------------------------	------------------------	-------------------

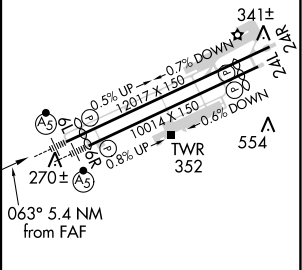


VGSI and ILS glidepath not coincident (VGSI Angle 3.00/TCH 73).					<div>2100</div> <div>3000</div>		<div>UNZ</div>	<div>I-GUM SW crs</div>	<div>OBALÉ I-GUM 14.3</div>	
<div>One Minute Holding Pattern</div> <div>OBALÉ I-GUM 14.3 RADAR</div>					<div>HARLO I-GUM 7.3 RADAR</div> <div>MOBKE I-GUM 5.8</div> <div>I-GUM 4.4</div> <div>I-GUM 2</div> <div>Use I-GUM DME when on the localizer course. *LOC only</div>					
<div>3000</div> <div>←243°</div> <div>063°→</div> <div>063°</div> <div>2000</div> <div>2000</div> <div>GS 3.00° TCH 55</div>										
<div>7 NM</div>					<div>1.5 NM</div>		<div>1.4 NM</div>		<div>2.5 NM</div>	
CATEGORY	A		B		C		D			
S-ILS 6L	590-½ 334 (300-½)									
S-LOC 6L	1500-¾ 1244 (1200-¾)		1500-1 1244 (1200-1)		1500-3		1244 (1200-3)			
<div>C</div> CIRCLING	1500-1¼ 1195 (1200-1¼)		1500-1½ 1195 (1200-1½)		1500-3		1195 (1200-3)			
MOBKE FIX MINIMUMS (DME REQUIRED)										
S-LOC 6L	1100-¾ 844 (800-¾)				1100-2 844 (800-2)					
<div>C</div> CIRCLING	1100-1 795 (800-1)		1100-1¼ 795 (800-1¼)		1100-2½ 795 (800-2½)		1140-2¾ 835 (900-2¾)			

ELEV 305  TDZE 256

I-GUM SW crs I-GUM 14.3

UNZ I-GUM OBALE



HIRL all Rwys

FAF to MAP 5.4 NM					
Knots	60	90	120	150	180
Min:Sec	5:24	3:36	2:42	2:10	1:48

PAC, 31 DEC 2020 to 25 FEB 2021

PAC, 31 DEC 2020 to 25 FEB 2021