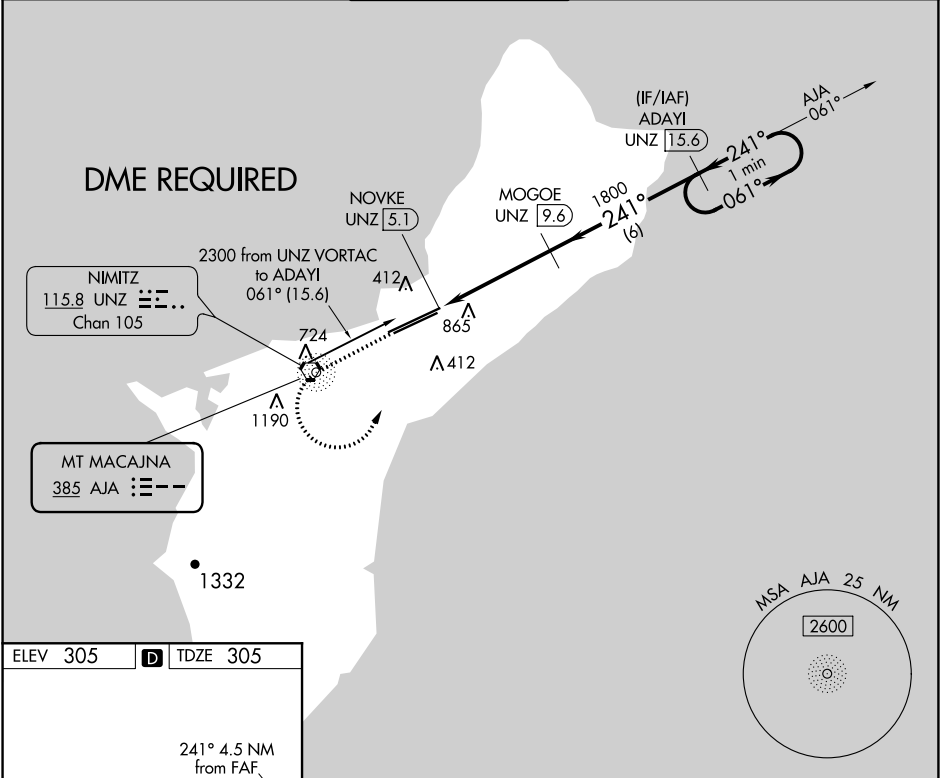


NDB AJA 385	APP CRS 241°	Rwy Idg 12015 TDZE 305 Apt Elev 305
-----------------------	------------------------	--

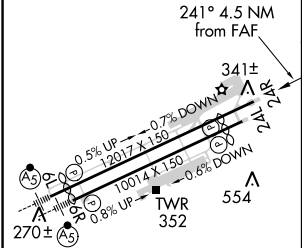
NDB RWY 24R
GUAM INTL (GUM)(PGUM)

<p>NA Circling NA southeast of Rwy 6R-24L. Rwy 24R helicopter visibility reduction below ¾ SM NA. DME from UNZ VORTAC, simultaneous reception of AJA NDB and UNZ DME required.</p>	<p>MISSED APPROACH: Climb to 2300 direct AJA NDB and left turn on bearing 061° from AJA NDB to ADAYI/UNZ 15.6 DME and hold.</p>
---	---

ATIS 119.0	GUAM CERAP 119.8 269.0	AGANA TOWER 118.1 340.2	GND CON 121.9 336.4	CLNC DEL 121.9
----------------------	----------------------------------	-----------------------------------	-------------------------------	--------------------------



ELEV 305	D	TDZE 305
-----------------	----------	-----------------



2300	AJA	ADAYI UNZ 15.6	One Minute Holding Pattern	
UNZ VORTAC	NOVKE UNZ 5.1	MOGOE UNZ 9.6	ADAYI UNZ 15.6	
AJA NDB	3.00° TCH 75	241°	061° → ← 241°	
4.5 NM		6 NM		
CATEGORY	A	B	C	D
S-24R	1220-1¼ 915 (1000-1¼)		1220-2½ 915 (1000-2½)	
CIRCLING	1220-1¼ 915 (1000-1¼)		1220-2¾ 915 (1000-2¾)	1220-3 915 (1000-3)