

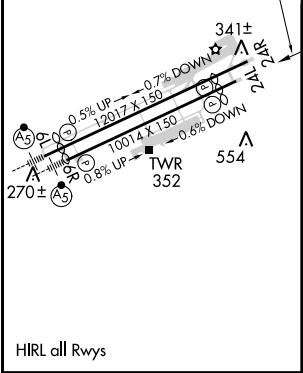
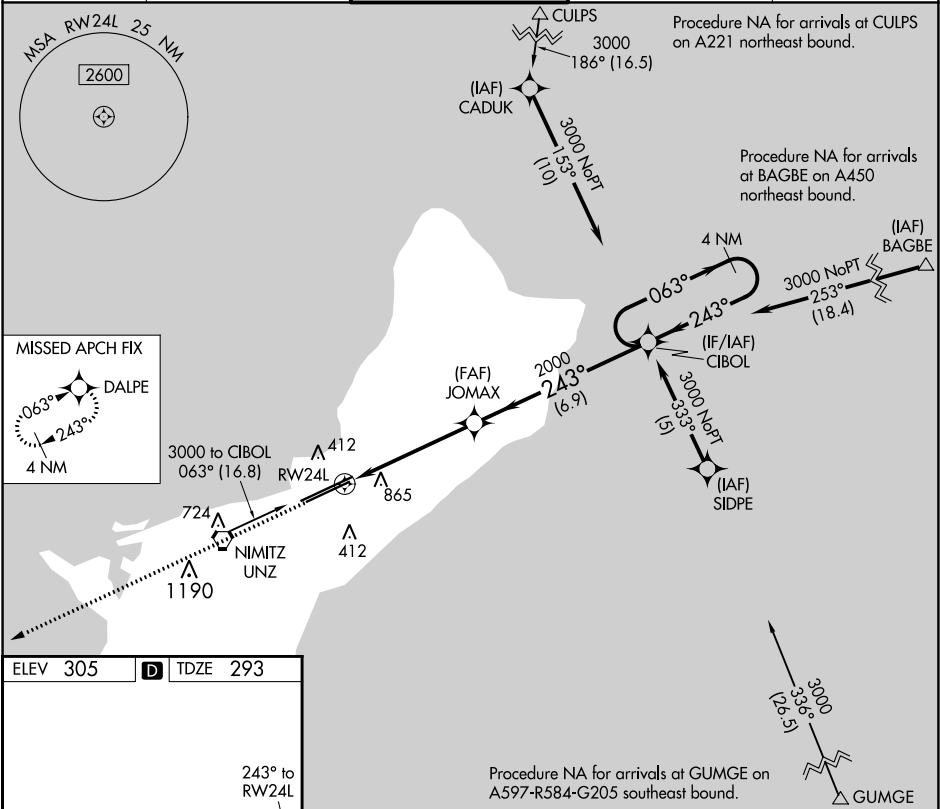
APP CRS	Rwy Idg	9014
243°	TDZE	293
	Apt Elev	305

RNAV (GPS) Y RWY 24L  
GUAM INTL (GUM)(PGUM)

**⚠** Circling NA southeast of Rwy 6R-24L.  
**⚠** Rwy 24L helicopter visibility reduction below ¾ SM NA.  
DME/DME RNP-0.3 NA.

MISSED APPROACH: Climb to 3000 direct DALPE and hold.

ATIS 119.0	GUAM CERAP 119.8 269.0	AGANA TOWER 118.1 340.2	GND CON 121.9 336.4	CLNC DEL 121.9
---------------	---------------------------	----------------------------	------------------------	-------------------



3000	DALPE	VGSI and descent angles not coincident (VGSI Angle 3.00/TCH 75).	CIBOL	4 NM Holding Pattern
CATEGORY	A	B	C	D
LNAV MDA	1180-1¼	887 (900-1¼)	1180-2¾ 887 (900-2¾)	1180-3 887 (900-3)
<b>C</b> CIRCLING	1180-1¼	875 (900-1¼)	1180-2¾ 875 (900-2¾)	1180-3 875 (900-3)

PAC, 31 DEC 2020 to 25 FEB 2021

PAC, 31 DEC 2020 to 25 FEB 2021