
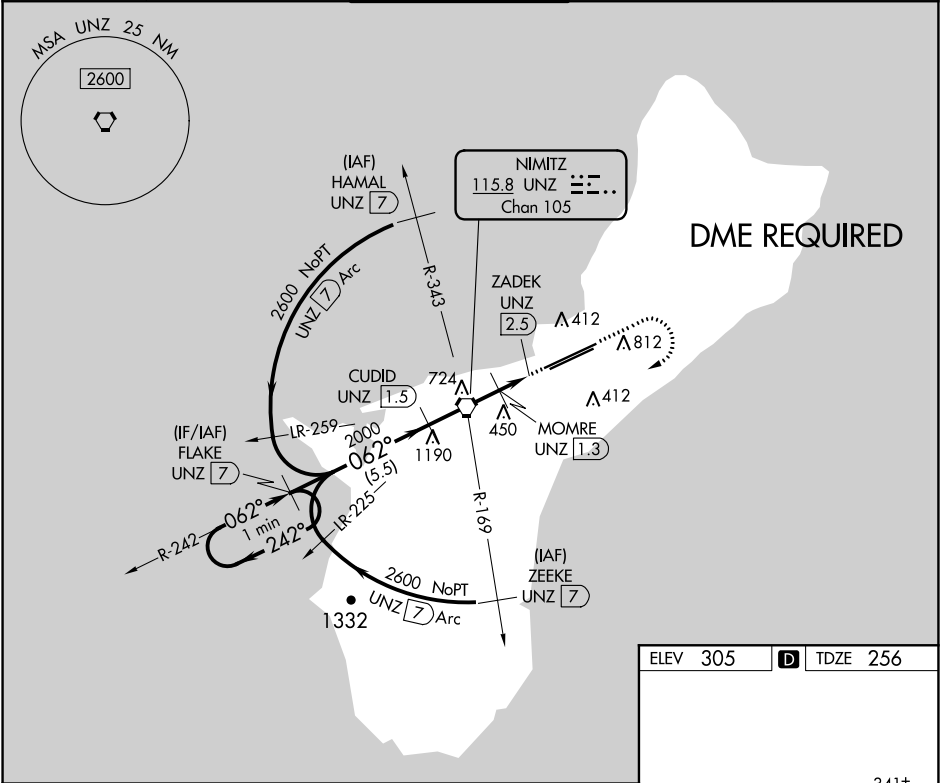


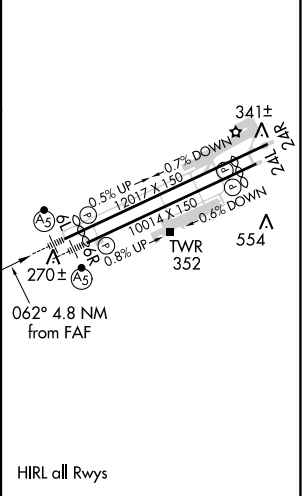
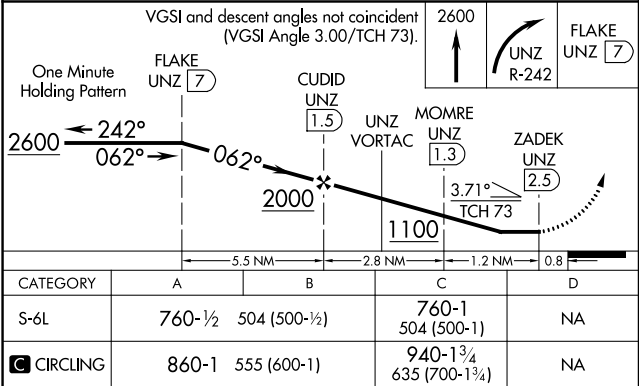
VORTAC UNZ	APP CRS	Rwy Idg
<b>115.8</b>	<b>062°</b>	<b>11014</b>
Chan <b>105</b>		TDZE <b>256</b>
		Apt Elev <b>305</b>

VOR or TACAN RWY 6L  
GUAM INTL (GUM) (PGUM)

T	Circling NA southeast of Rwy 6R-24L. DME required. For inop ALS, increase Cat C visibility to 1 3/8 SM.		MALSR 	MISSED APPROACH: Climb to 2600 then right turn on UNZ VORTAC R-242 to FLAKE/7 DME and hold.	
	ATIS 119.0	GUAM CERAP 119.8 269.0	AGANA TOWER 118.1 340.2	GND CON 121.9 336.4	CLNC DEL 121.9



ELEV 305	<b>D</b> TDZE 256
----------	-------------------



PAC, 31 DEC 2020 to 25 FEB 2021

PAC, 31 DEC 2020 to 25 FEB 2021