

APP CRS  
055°

Rwy Idg  
5197

TDZE  
2671

Apt Elev  
2671

RNAV (GPS) RWY 4

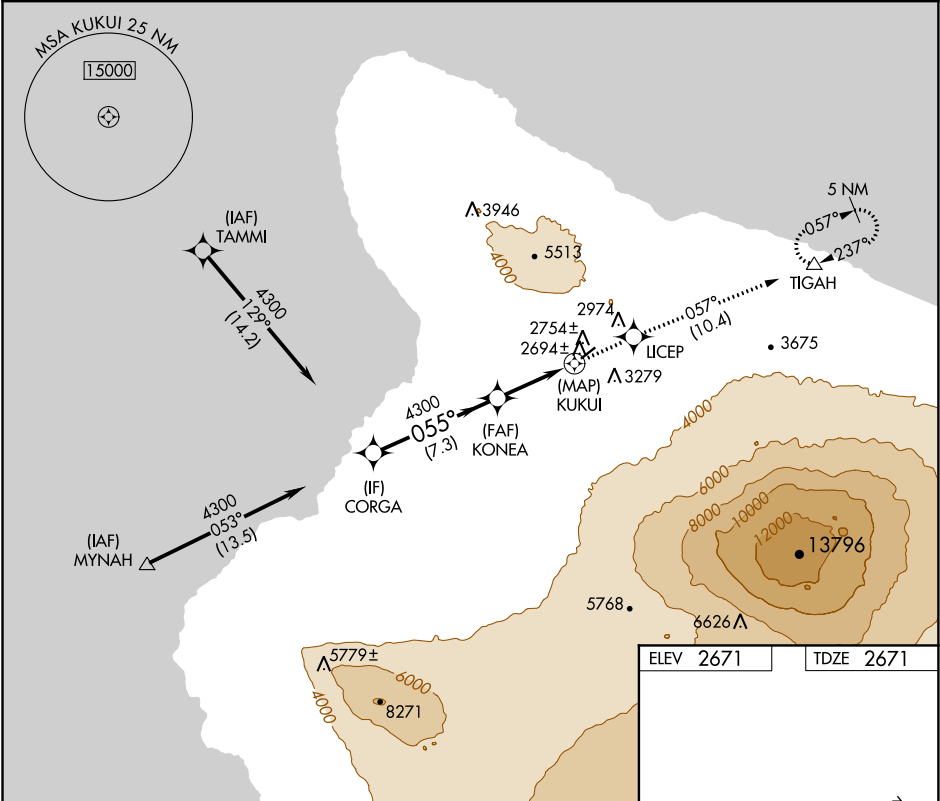
WAIMEA-KOHALA (MUE)(PHMU)

NA

Circling NA northwest of Rwy 4-22.  
When local altimeter setting not received, procedure NA.  
DME/DME RNP-0.3 NA.

MISSED APPROACH: Climb to 5000 direct UCEP and on track 057° to TIGAH and hold.

|                   |                            |               |
|-------------------|----------------------------|---------------|
| AWOS-3PT<br>120.0 | HCF CENTER<br>118.45 278.3 | CTAF<br>122.9 |
|-------------------|----------------------------|---------------|



VGSI and descent angles not coincident (VGSI Angle 2.50/TCH 43).

CORGA

KONEA

KUKUI

TIGAH

4300

055°

4300

1.5 NM to KUKUI

3.00° TCH 45

7.3 NM

3 NM

1.5

0.5

| CATEGORY  | A       | B            | C       | D            |
|-----------|---------|--------------|---------|--------------|
| LNNAV MDA | 3220-1  | 549 (600-1)  | 3220-1½ | 549 (600-1½) |
| CIRCLING  | 3520-1¼ | 849 (900-1¼) | 3520-2½ | 3880-3       |

ELEV 2671

TDZE 2671

MIRL Rwy 4-22

REIL Rwys 4 and 22