

APP CRS
354°

Rwy Idg **11000**
TDZE **37**
Apt Elev **47**

RNAV (GPS) RWY 35

ELLISON ONIZUKA KONA INTL AT KEAHOLE (KOA) (PHKO)

RNP APCH.

▼

▲

Circling NA east of Rwy 17-35. WAAS VNAV NA. For uncompensated Baro-VNAV systems, LNAV/VNAV NA below 17°C or above 54°C.

MISSED APPROACH: Climb to 500 then climbing left turn to 5000 direct AMERY and hold.

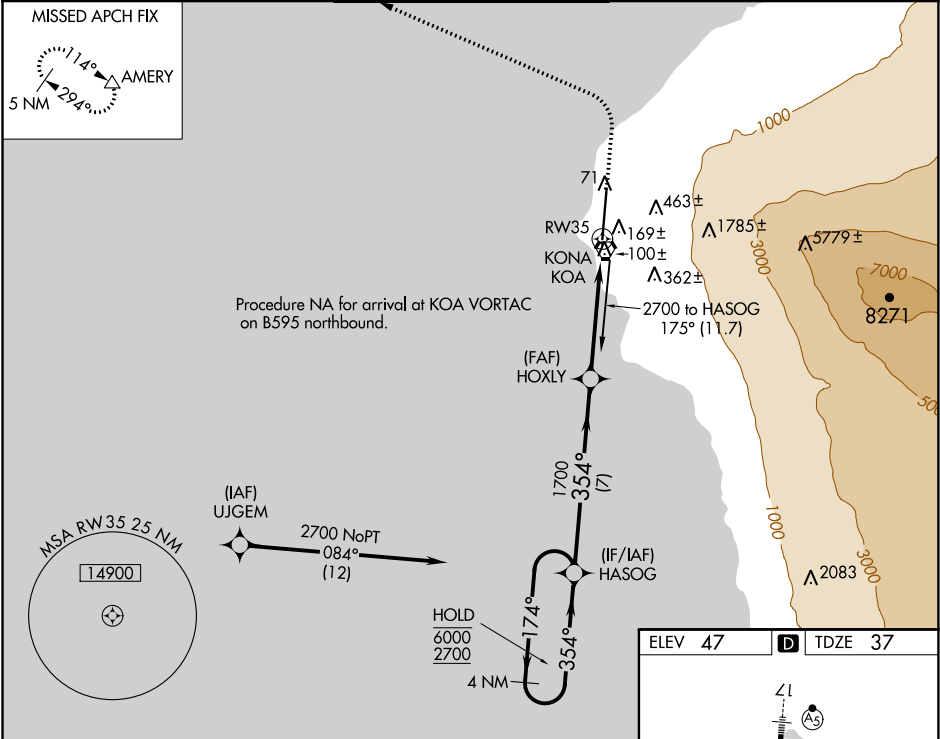
ATIS
127.4

HCF CENTER
118.45 278.3

KONA TOWER★
120.3(CTAF) **0 254.3**

GND CON
121.9

CLNC DEL
118.6



ELEV 47

TDZE 37

500

5000

AMERY

CATEGORY	A	B	C	D	E
LNAV/VNAV DA	366-1 329 (400-1)				
LNAV MDA	420-1 383 (400-1)		420-1½ 383 (400-1½)		
CIRCLING	520-1 473 (500-1)		600-2 553 (600-2)		