

APP CRS	Rwy Idg 11000
174°	TDZE 47
	Apt Elev 47

RNAV (RNP) Z RWY 17
ELLISON ONIZUKA KONA INTL AT KEAHOE (KOA) (PHKO)

7

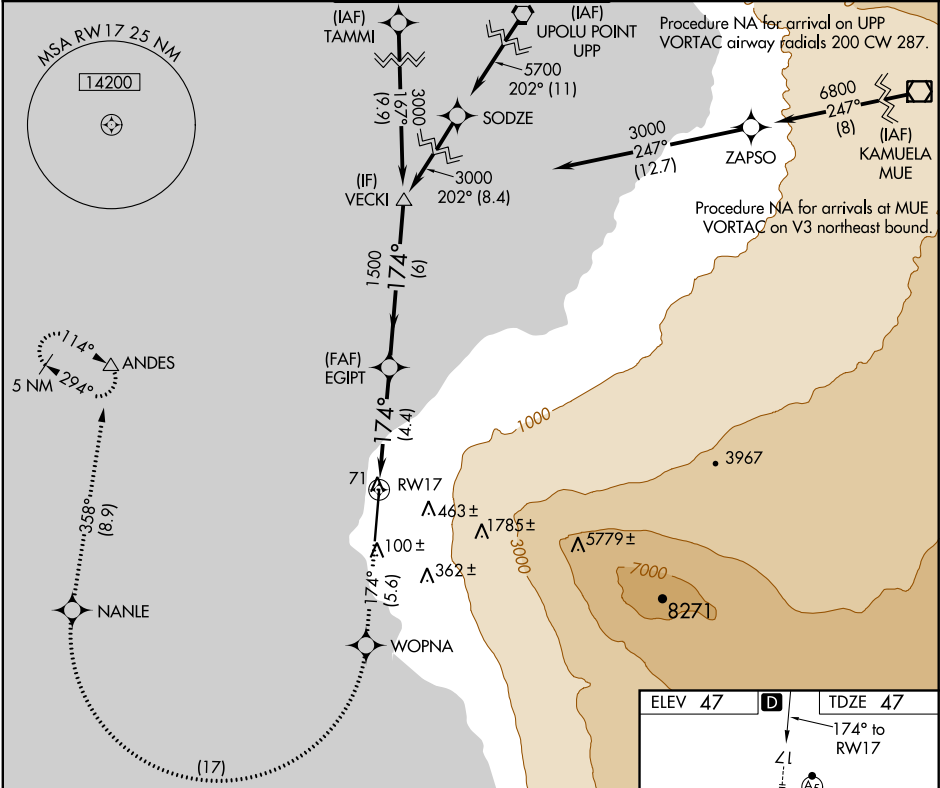
For uncompensated Baro-VNAV systems, procedure NAs below 6°C (43°F) or above 48°C (119°F). RF required. GPS required. For inop ALS, increase RNP 0.30 all Cats visibility to 1½ mile.

MALSR

A5

MISSED APPROACH: Climb to 5000 on track 174° to WOPNA and right turn to NANLE, and on track 358° to ANDES and hold.

ATIS 127.4	HCF CENTER 118.45 278.3	KONA TOWER ★ 120.3 (CTAF) 254.3	GND CON 121.9	CLNC DEL 118.6
----------------------	-----------------------------------	---	-------------------------	--------------------------



VECKI

5000

tr 174°

WOPNA

EGIPT

1500

NANLE

tr 358°

ANDES

3000

174°

1500

GP 3.00°

TCH 55

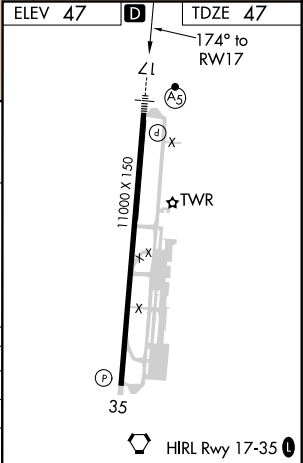
6 NM

4.4 NM

RW17

CATEGORY	A	B	C	D
RNP 0.17 DA	297-3/4 250 (300-3/4)			
RNP 0.30 DA	484-1 437 (500-1)			

AUTHORIZATION REQUIRED



PAC, 31 DEC 2020 to 25 FEB 2021

PAC, 31 DEC 2020 to 25 FEB 2021