

VORTAC KOA

112.1

Chan 58

APP CRS

171°

Rwy Idg

11000

TDZE

47

Apt Elev

47

VOR or TACAN RWY 17

ELLISON ONIZUKA KONA INTL AT KEAHOLE (KOA) (PHKO)

DME required.

⚠

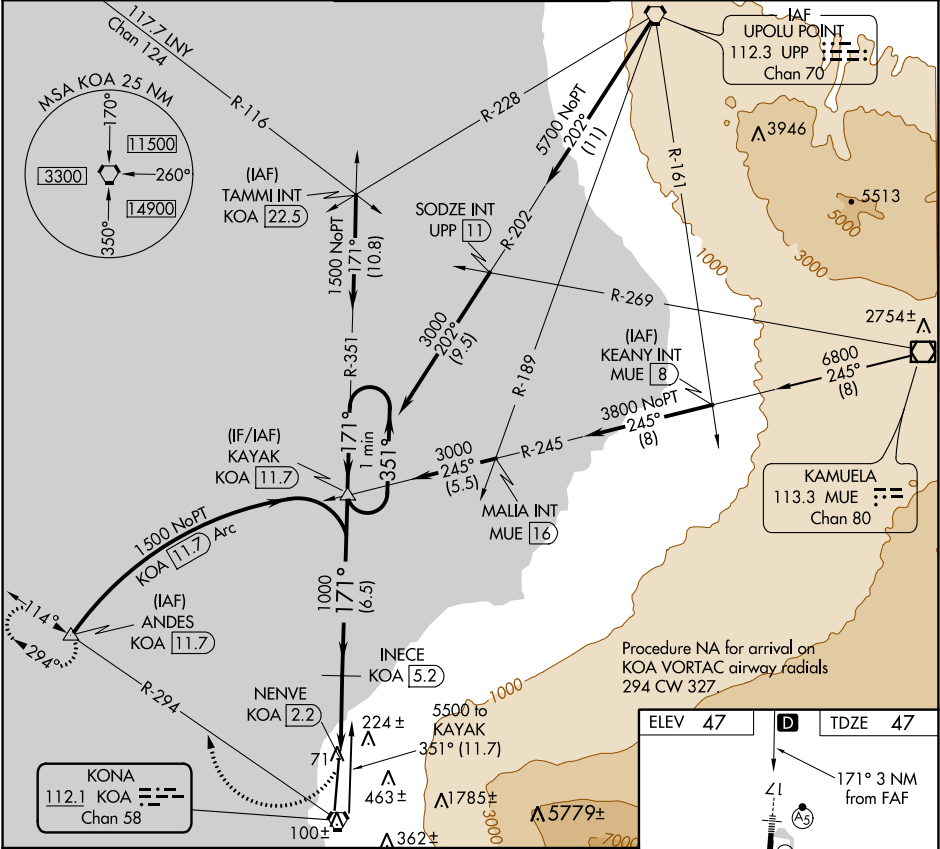
Circling NA east of Rwy 17-35. For inop ALS, increase S-17 Cat A, B visibility to 1 mile, Cat E visibility to 1½ mile.

MALSR

AS

MISSED APPROACH: Climbing right turn to 1500 on KOA VORTAC R-294 to ANDES/11.7 DME and hold.

ATIS	HCF CENTER	KONA TOWER★	GND CON	CLNC DEL
127.4	118.45 278.3	120.3(CTAF) 0 254.3	121.9	118.6



One Minute Holding Pattern

1500

← 351°

171° →

VGSI and descent angles not coincident (VGSI angle 3.00/TCH 77).

6.5 NM

1.4 NM

1.6 NM

KAYAK KOA 11.7

INECE KOA 5.2

KOA 3.8

NENVE KOA 2.2

1500

1000

711

224 ±

351 ± (11.7)

463 ±

Δ 1785 ±

Δ 5779 ±

CATEGORY	A	B	C	D	E
S-17	600-¾	553 (600-¾)	600-1½	553 (600-1½)	
CIRCLING	600-1	553 (600-1)	600-1½	553 (600-1½)	600-2 553 (600-2)

ELEV 47

TDZE 47

171° 3 NM from FAF

11000 X 150

35

HIRL Rwy 17-35