

NDB/DME YP
317
Chan **122 (117.5)**

APP CRS
237°

Rwy Idg **6000**
TDZE **89**
Apt Elev **91**

NDB/DME RWY 25

YAP INTL (T11)(PTYA)

Obtain local altimeter setting on CTAF; when not received, procedure NA.

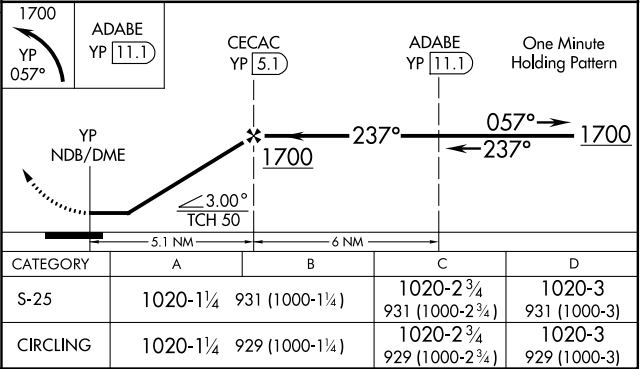
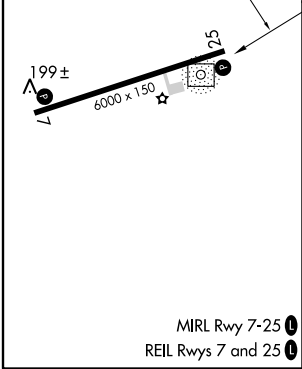
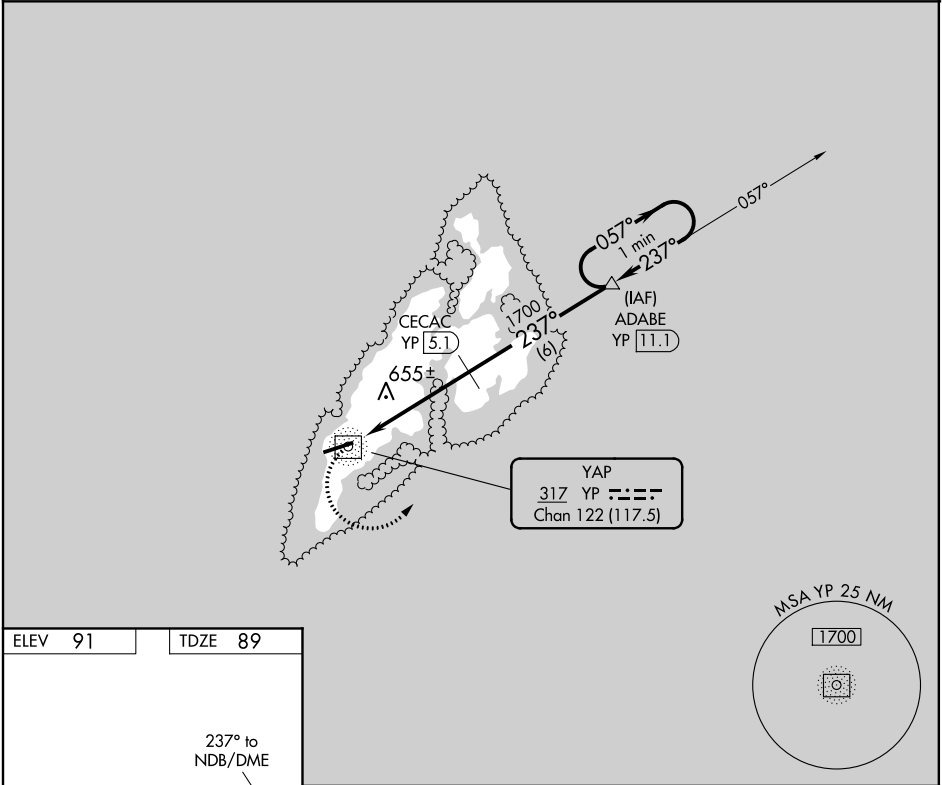
Circling NA north of Rwy 7-25.

No controlled airspace below 5500.

MISSED APPROACH: Climbing left turn to 1700 via 057° bearing from YP NDB/DME to ADABE/11.1 DME and hold.

YAP RADIO

123.6 (CTAF)



PAC, 31 DEC 2020 to 25 FEB 2021

PAC, 31 DEC 2020 to 25 FEB 2021