

APP CRS	Rwy Idg	6000
071°	TDZE	91
	Apt Elev	91

RNAV (GPS) RWY 7

YAP INTL (T11)(PTYA)

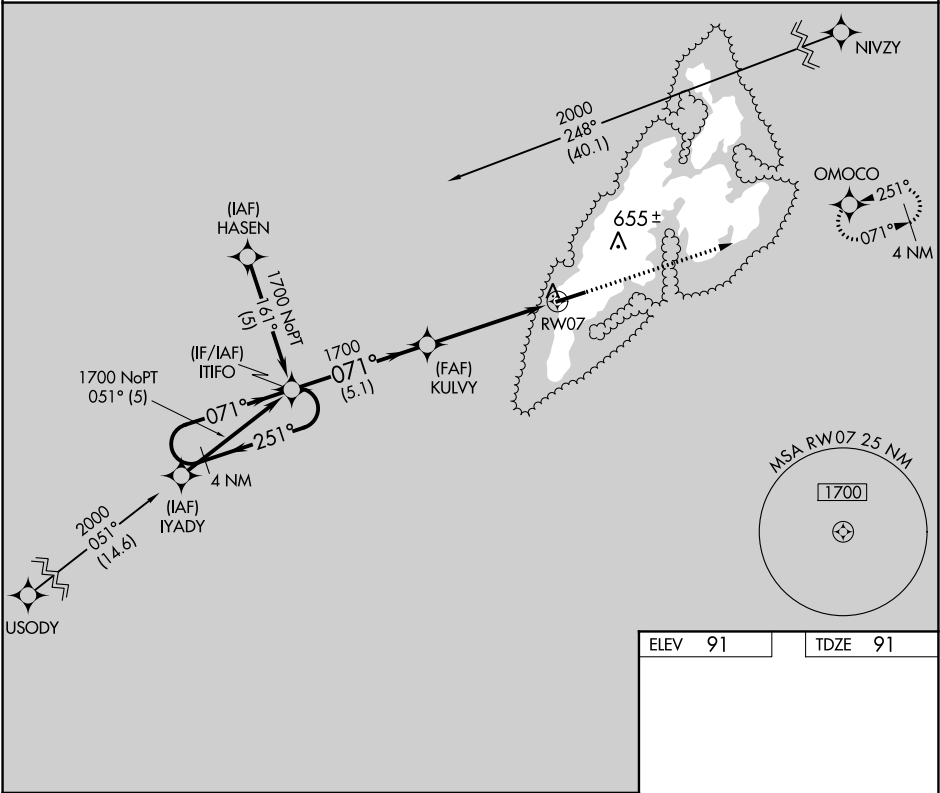
▽

Obtain local altimeter setting on CTAF; when not received, procedure not authorized.
Circling NA North of Rwy 7-25. DME/DME RNP-0.3 NA.
No controlled airspace below 5500'.

MISSED APPROACH: Climb to 1700 direct
OMOCO WP and hold.

YAP RADIO

123.6 0 (CTAF)



4 NM Holding Pattern

ITIFO

KULVY

1700

OMOCO

1700

251°

071°

1700

3.00°

TCH 50

5.1 NM

4.9 NM

RW07

CATEGORY	A	B	C	D
RNAV MDA	600-1	509 (600-1)	600-1½	509 (600-1½)
CIRCLING	600-1	509 (600-1)	600-1½ 509 (600-1½)	660-2 569 (600-2)

ELEV 91

TDZE 91

238±

199±

125

6000 x 150

071° to RW07

MIRL Rwy 7-25

REIL Rws 7 and 25

PAC, 31 DEC 2020 to 25 FEB 2021

PAC, 31 DEC 2020 to 25 FEB 2021