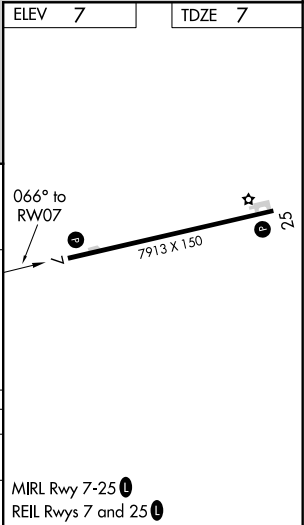
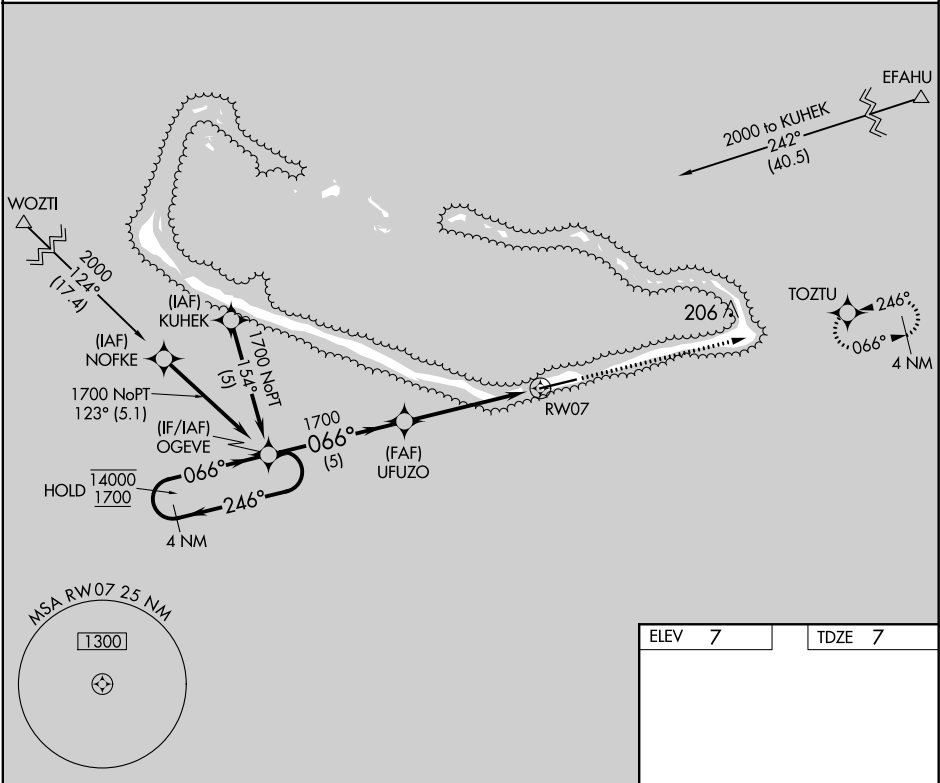


APP CRS	Rwy Idg	7913
066°	TDZE	7
	Apt Elev	7

RNAV (GPS) RWY 7  
AMATA KABUA INTL (MAJ)(PKMJ)

RNP APCH.	MISSED APPROACH: Climb to 1700 direct TOZTU and hold.
▼ Rwy 7 helicopter visibility reduction below ¾ SM NA. ▲ NA Obtain local altimeter setting on CTAF; when not received, procedure NA. Uncontrolled airspace below 5500.	

MAJURO RADIO  
123.6 (CTAF) 0



	4 NM Holding Pattern		OGEVE	UFUZO	1700	TOZTU
	1400	1700	066°	066°	1700	RW07
			246°	066°		3.09° TCH 54
			066°			
			5 NM	5 NM		
CATEGORY	A	B	C	D		
RNAV MDA	460-1	453 (500-1)	460-1 3/8	453 (500-1 3/8)		
CIRCLING	520-1	513 (600-1)	520-1 1/2	560-2		
			513 (600-1 1/2)	553 (600-2)		

PAC, 31 DEC 2020 to 25 FEB 2021

PAC, 31 DEC 2020 to 25 FEB 2021