

APP CRS	Rwy Idg	6600
258°	TDZE	9
	Apt Elev	9

RNAV (GPS) RWY 27

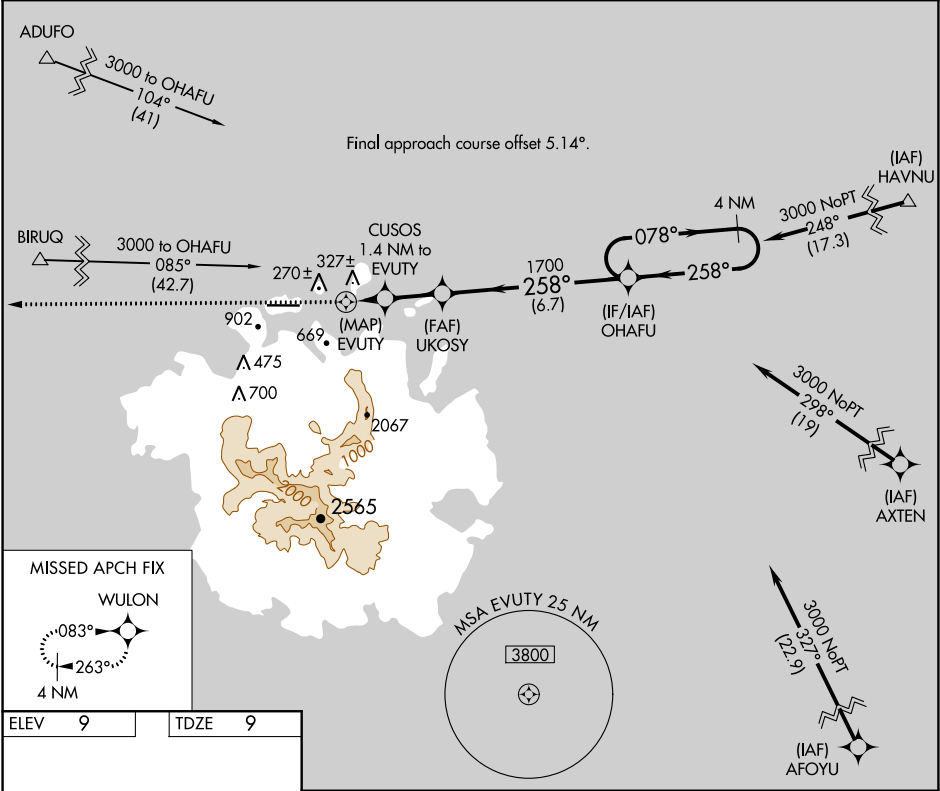
POHNPEI INTL (PNI)(PTPN)

Obtain local altimeter setting on CTAF; when not received, procedure NA. Circling NA south of Rwy 9-27. Procedure NA at night except by prior arrangement for runway lights. DME/DME RNP-0.3 NA. No controlled airspace below 5500. Ships with maximum height of 150 feet MSL may traverse Pohnpei Channel 400 feet off approach end of runway 9, closing airport at times.



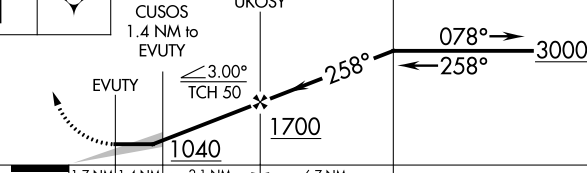

MISSED APPROACH:
Climb to 3000 direct
WULON and hold.

POHNPEI RADIO

123.6 (CTAF) 0



ELEV	9	TDZE	9
<div>MIRL Rwy 9-27 0</div> <div>REIL Rwys 9 and 27</div>			

3000	WULON				
					
CATEGORY	A	B	C	D	
LNAV MDA	720-2 711 (800-2)				
 CIRCLING	720-2 711 (800-2)			720-2¼ 711 (800-2¼)	