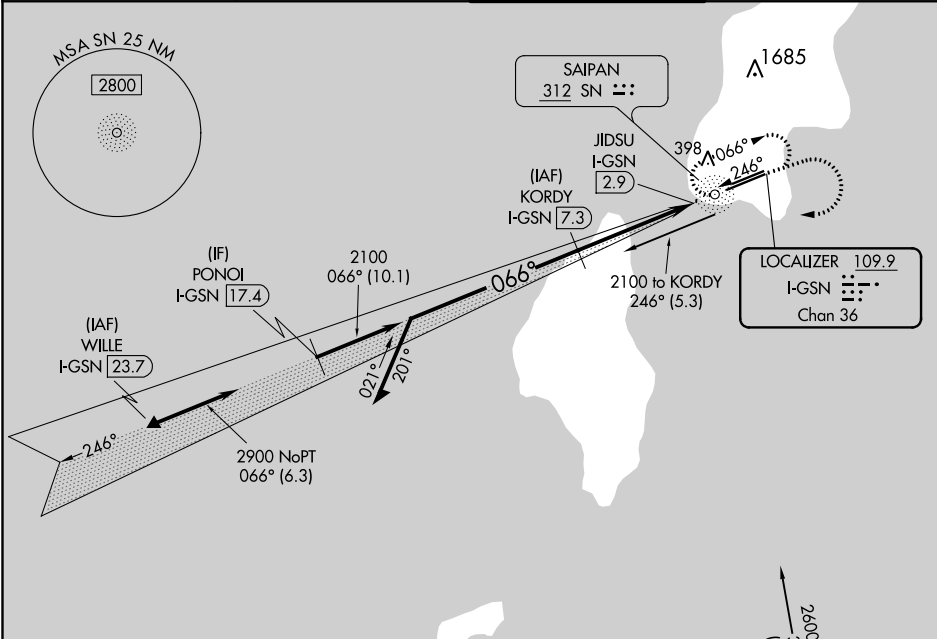


LOC/DME I-GSN	APP CRS	Rwy Idg
109.9	066°	8700
Chan 36		TDZE 215
		Apt Elev 215

ILS or LOC RWY 7
FRANCISCO C ADA/SAIPAN INTL (GSN)(PGSN)

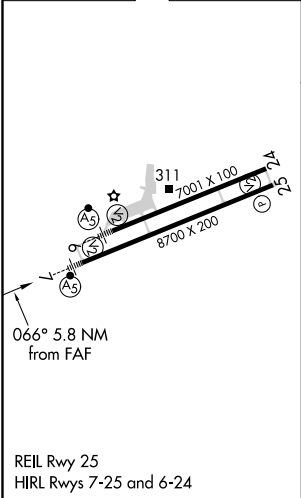
NA Circling NA north of Rwy 6-24. ADF and DME required.	MALSR 	MISSED APPROACH: Climb to 1600 then climbing right turn to 2800 direct SN NDB and hold.
--	------------------	--

ATIS 127.2	GUAM APP CON 118.4 290.5	SAIPAN TOWER 125.7 256.9	GND CON 121.8
-----------------------------	---	---	--------------------------------



ELEV 215	D	TDZE 215
-----------------	----------	-----------------

DME REQUIRED



Remain within 10 NM	KORDY I-GSN [7.3]	1600	2800	SN
2100	2100	2100	2100	
GS 3.00° TCH 55				
	4.5 NM	0.6 NM	0.7 NM	
CATEGORY	A	B	C	D
S-ILS 7	415-1/2 200 (200-1/2)			
S-LOC 7	480-1/2 265 (300-1/2)			
C CIRCLING	720-1 505 (600-1)	720-1/2 505 (600-1/2)	780-2 565 (600-2)	