

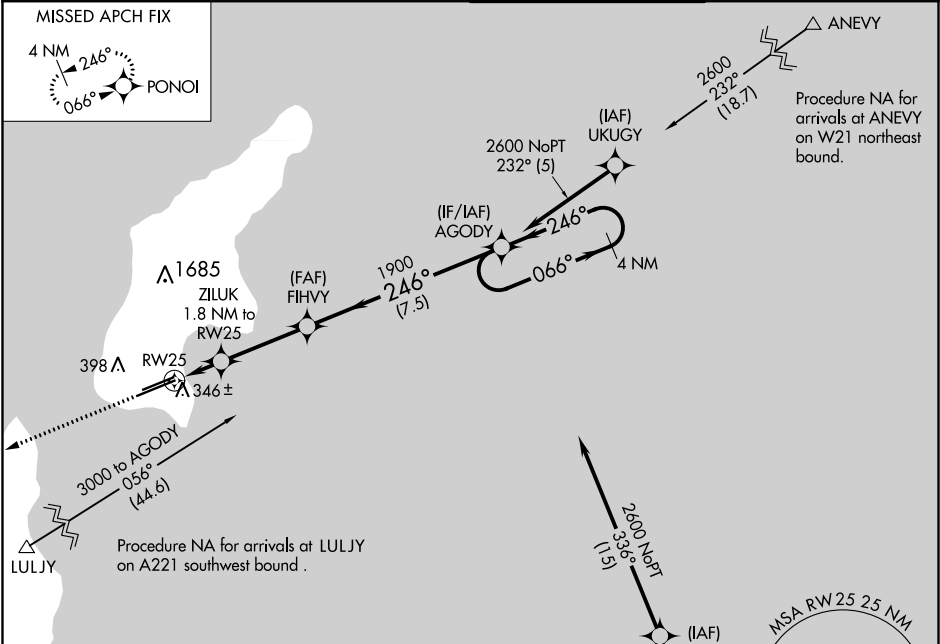
APP CRS	Rwy Idg	8700
246°	TDZE	210
	Apt Elev	215

RNAV (GPS) RWY 25

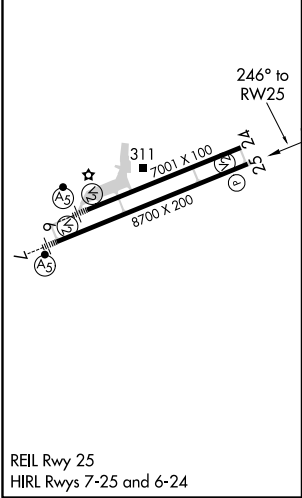
FRANCISCO C ADA/SAIPAN INTL (GSN)(PGSN)

<div><div></div><div>Circling NA north of Rwy 6-24. Rwy 25 helicopter visibility reduction below ¾ NA. DME/DME RNP-0.3 NA.</div></div>	MISSED APPROACH: Climb to 2600 direct PONOI and hold.
--	---

ATIS 127.2	GUAM APP CON 118.4 290.5	SAIPAN TOWER 125.7 256.9	GND CON 121.8
---------------	-----------------------------	-----------------------------	------------------



ELEV 215	<div>D</div>	TDZE 210
----------	--------------	----------



2600 ↑ PONOI ✧		AGODY 4 NM Holding Pattern		
ZILUK 1.8 NM to RW25		FIHVY 1900		
0.9 NM to RW25		246°		
RW25		066° → 2600 ← 246°		
0.9 NM		3.00 TCH 60		
0.9 NM		3.3 NM		
3.3 NM		7.5 NM		
CATEGORY	A	B	C	D
LNAV MDA	600-1	390 (400-1)	600-1½	390 (400-1½)
CIRCLING	720-1	505 (600-1)	720-1½ 505 (600-1½)	780-2 565 (600-2)