

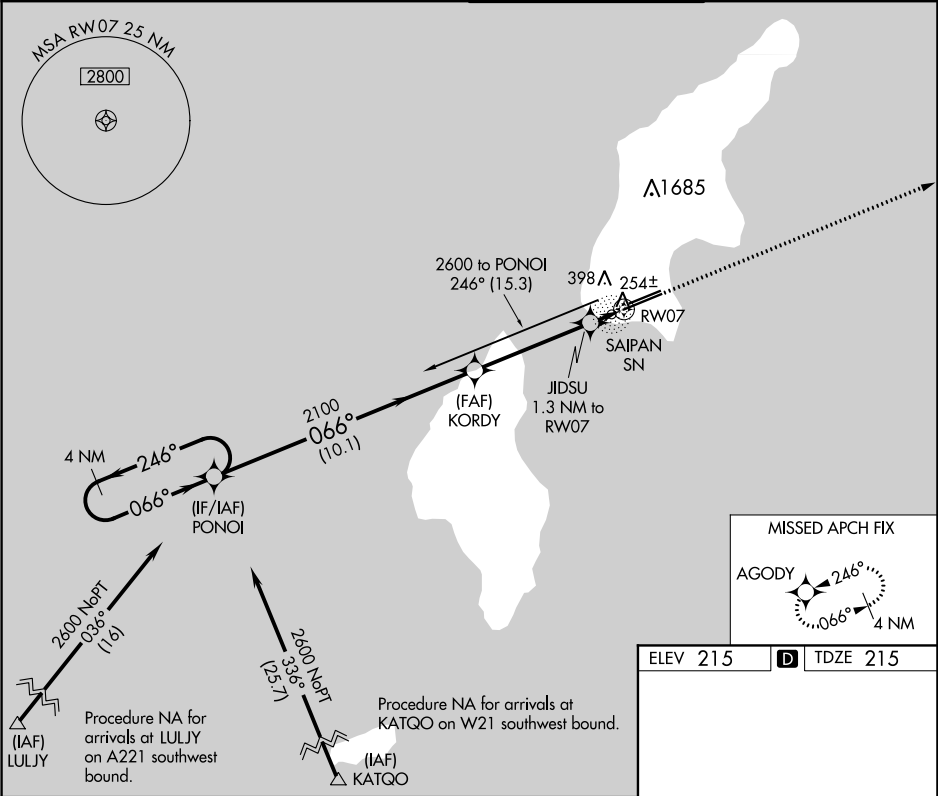
APP CRS	Rwy Idg	8700
066°	TDZE	215
	Apt Elev	215

RNAV (GPS) RWY 7

FRANCISCO C ADA/SAIPAN INTL (GSN)(PGSN)

<div><div>⚠</div><div>Circling NA north of Rwy 6-24. DME/DME RNP-0.3 NA.</div></div>	<div><div>MALSR</div><div></div></div>	<div>MISSED APPROACH: Climb 2600 direct AGODY and hold.</div>
--	--	---

ATIS 127.2	GUAM APP CON 118.4 290.5	SAIPAN TOWER 125.7 256.9	GND CON 121.8
---------------	-----------------------------	-----------------------------	------------------



					2600	AGODY
CATEGORY	A	B	C	D		
LNAV MDA	520-½		305 (400-½)			
CIRCLING	720-1	505 (600-1)		720-1½ 505 (600-1½)	780-2 565 (600-2)	

