

NDB GRO

332

APP CRS

260°

Rwy Idg

7000

TDZE

607

Apt Elev

607

NDB RWY 27

BENJAMIN TAISACAN MANGLONA INTL (GRO)(PGRO)

⚠

When local altimeter setting not received, use Andersen AFB altimeter setting and increase all MDA 320 feet, increase S-27 Cat B visibility ¼ mile, Cat C, D visibility 1½ mile, Circling Cat A, B visibility ¼ mile, Cat C 1 mile, Cat D ¾ mile. Circling NA south of Rwy 9-27.

MISSED APPROACH:

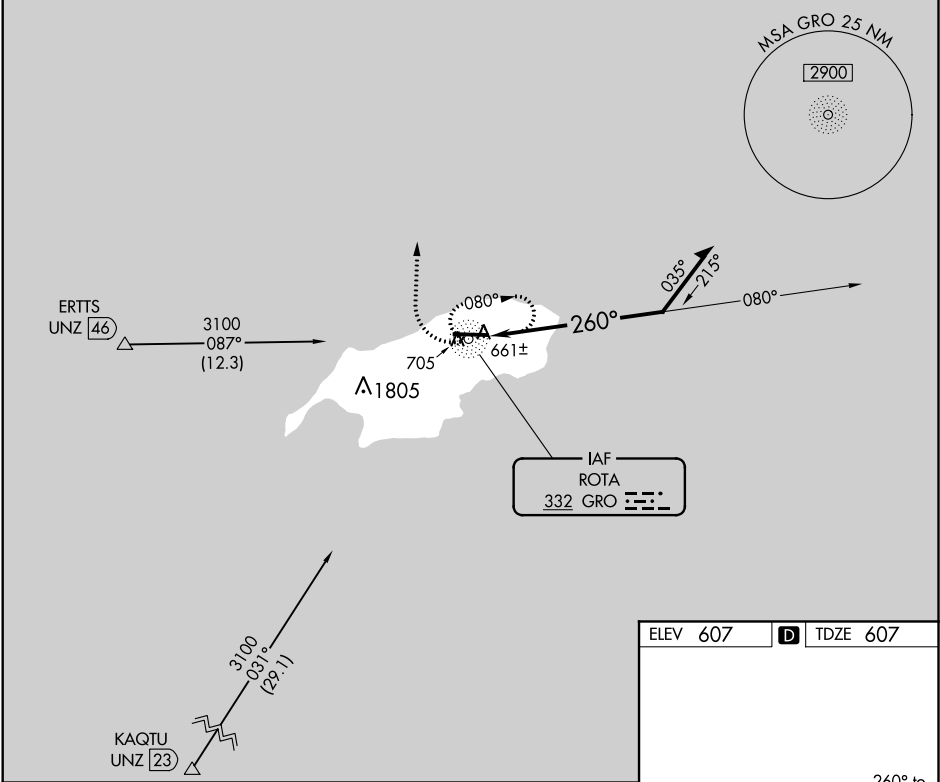
Climbing right turn to 2000 on heading 360° then continue climbing right turn to 3100 direct GRO NDB and hold.

GUAM CENTER

120.5 263.0

CTAF

123.6 0



2000

3100

GRO

hdg 360°

3100

3100

GRO NDB

3100

2000

Remain within 10 NM

080°

260°

CATEGORY	A	B	C	D
S-27	1120-1	513 (600-1)	1120-1⅓	513 (600-1⅓)
CIRCLING	1120-1	513 (600-1)	1120-1½	1160-2

ELEV 607

TDZE 607

REIL Rwy 9 0

MIRL Rwy 9-27 0

260° to NDB

27

7000 X 150

0.3% UP