

APP CRS	Rwy Idg	5752
058°	TDZE	10
	Apt Elev	11

RNAV (GPS) RWY 5

KOSRAE (TTK)(PTSA)

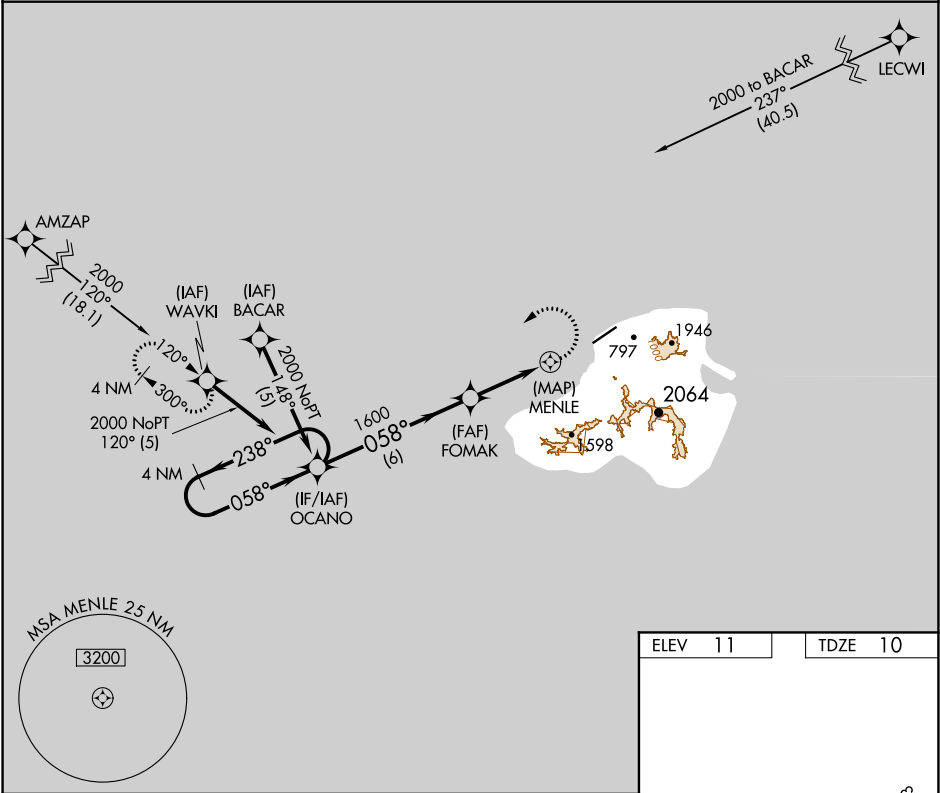
⚠

⚠

Circling not authorized southeast of Rwy 5-23.  
Obtain local altimeter setting on CTAF; when not received, procedure not authorized. DME/DME RNP-0.3 NA.  
No controlled airspace below 5500.

MISSED APPROACH: Climbing left turn to 2000 direct WAVKI WP and hold.

KOSRAE RADIO  
123.6 (CTAF) 0



4 NM Holding Pattern

OCANO

FOMAK

MENLE

2000

238°

058°

058°

1600

3.00°

TCH 50

6 NM

3.1 NM

1.7

CATEGORY	A	B	C	D
LNNAV MDA	460-2 450 (500-2)			
CIRCLING	520-2 509 (600-2)		580-2 569 (600-2)	

ELEV 11

TDZE 10

2000

WAVKI

5752 X 150

MIRL Rwy 5-23 0

REIL Rwy 5 and 23 0

PAC, 31 DEC 2020 to 25 FEB 2021

PAC, 31 DEC 2020 to 25 FEB 2021