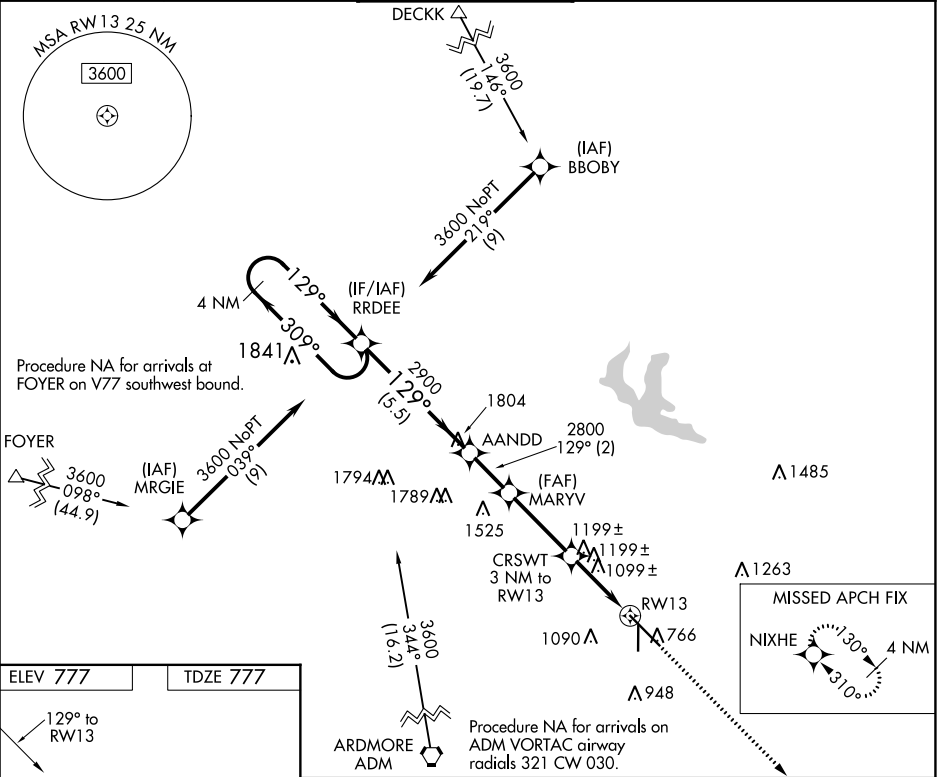


WAAS CH 53725 W13A	APP CRS 129°	Rwy Idg TDZE 777 Apt Elev 777
--	------------------------	---

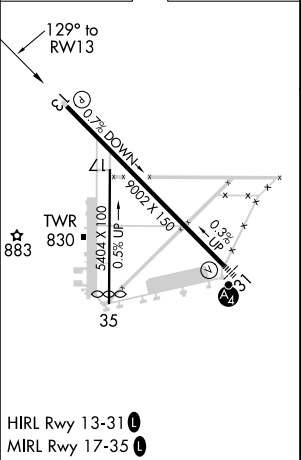
RNAV (GPS) RWY 13
ARDMORE MUNI (ADM)

RNP APCH. ▼ Rwy 13 helicopter visibility reduction below 1 SM NA. When local altimeter setting not received, use Ardmore Downtown Executive altimeter setting and increase all MDA 40 feet. Procedure NA at night. ▲	MISSED APPROACH: Climb to 3600 direct NIXHE and hold.
--	---

ATIS 125.6	FORT WORTH CENTER 124.75 323.0	ARDMORE TOWER ★ 118.5 (CTAF) 0 257.7	GND CON 121.8	UNICOM 122.95
----------------------	--	--	-------------------------	-------------------------



ELEV 777	TDZE 777
----------	----------



4 NM Holding Pattern				3600	NIXHE
RRDEE				↑	★
AANDD				3600	309°
MARYV				129°	129°
CRSWT 3 NM to RWY 13				2900	2800
TCH 57				1780	1780
RWY 13				5.5 NM	2 NM
CATEGORY				A	B
LP MDA				1360-1	583 (600-1)
LNAV MDA				1460-1	683 (700-1)

SC-1, 31 DEC 2020 to 28 JAN 2021

SC-1, 31 DEC 2020 to 28 JAN 2021