

WAAS CH <b>69625</b> <b>W31A</b>	APP CRS <b>309°</b>	Rwy Idg TDZE <b>733</b> Apt Elev <b>777</b>
--	------------------------	---

RNAV (GPS) RWY 31

ARDMORE MUNI (ADM)

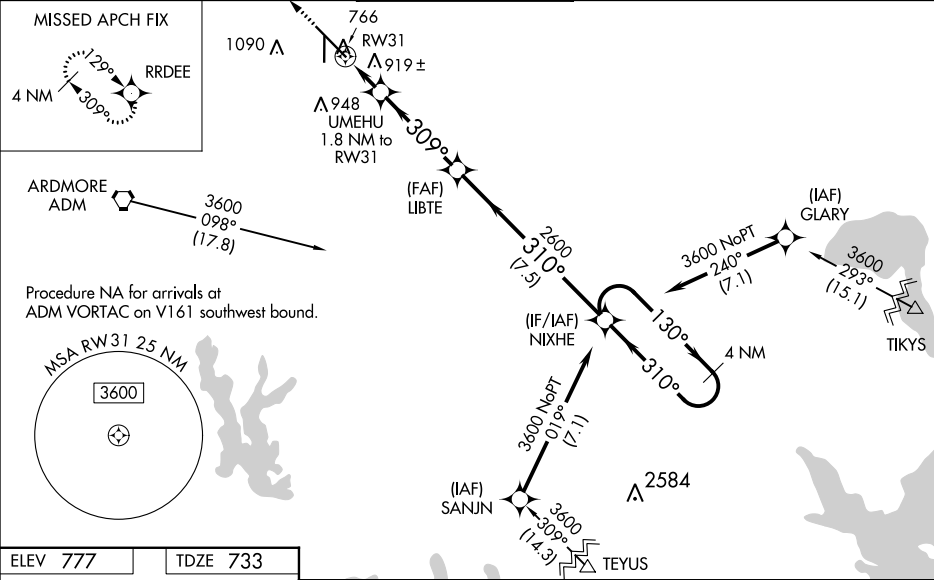
RNP APCH.

For uncompensated Baro-VNAV systems, LNAV/VNAV NA below -16°C or above 54°C .When local altimeter setting not received, use Ardmore Downtown Executive altimeter setting: increase LPV DA to 1026 feet; increase LNAV/VNAV DA to 1276 feet and all visibilities  $\frac{3}{8}$  SM; increase all MDAs 40 feet and Circling Cats C and D visibility  $\frac{1}{4}$  SM. Inop table does not apply to LPV, all Cats and LNAV Cats A and B. When using Ardmore Downtown Executive altimeter setting, inop table does not apply to LPV all Cats and LNAV Cats A and B. For inop ALS, increase LNAV Cats C and D visibility to  $\frac{1}{8}$  SM. For inop ALS, when using Ardmore Downtown Executive altimeter setting, increase LNAV Cats C and D to  $\frac{1}{8}$  SM. VDP NA when using Ardmore Downtown Executive altimeter setting. Rwy 31 helicopter visibility reduction below  $\frac{3}{4}$  SM NA. Rwy 13, 35 helicopter visibility reduction below 1 SM NA. Circling Rwy 13, 35 NA at night.

MALS

MISSED APPROACH:  
Climb to 3600 direct  
RRDEE and hold.

ATIS <b>125.6</b>	FORT WORTH CENTER <b>124.75 323.0</b>	ARDMORE TOWER * <b>118.5 (CTAF) 0 257.7</b>	GND CON <b>121.8</b>	UNICOM <b>122.95</b>
----------------------	--	--	-------------------------	-------------------------



ELEV <b>777</b>	TDZE <b>733</b>
-----------------	-----------------

3600 RRDEE

\*LNAV only.

UMEHU 1.8 NM to RW31

LIBTE 2600

NIXHE 4 NM Holding Pattern

309° to RW31

310°

3600

GP 3.00° TCH 49

CATEGORY	A	B	C	D
LPV DA		991-1	258 (300-1)	
LNAV/VNAV DA		1241-1¼	508 (500-1¼)	
LNAV MDA		1180-1	447 (500-1)	
CIRCLING	1380-1	603 (700-1)	1440-1¾ 663 (700-1¾)	1440-2 663 (700-2)