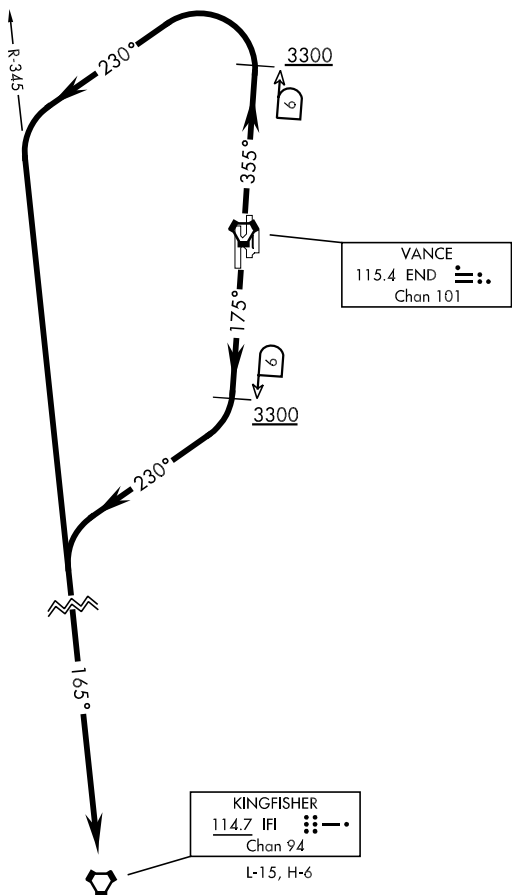


ATIS ★ 115.4 263.15  
CLNC DEL  
225.4  
GND CON  
121.8 289.4  
VANCE TOWER ★  
124.05 259.1  
VANCE DEP CON  
120.525 306.3  
FORT WORTH CENTER  
128.4 290.2

Rwy	Knots	60	120	180	240
35L	V/V(fpm)	360	710	1060	1420
35C	V/V(fpm)	380	760	1140	1510
17R	V/V(fpm)	430	850	1270	1690
17C	V/V(fpm)	400	790	1180	1580

ATC Climb Rate to 3300



DME REQUIRED

EMERG SAFE ALT 100 NM 4800

**DEPARTURE ROUTE DESCRIPTION**

**TAKE-OFF RWY 17C/R:** Track 175 ° to END VORTAC 6 DME, cross END 6 DME at or above 3300, then turn right heading 230°, intercept IFI VORTAC R-345 to IFI.

**TAKE-OFF RWY 35C/L:** Track 355° to END VORTAC 6 DME, cross END 6 DME at or above 3300, then turn left heading 230°, intercept IFI VORTAC R-345 to IFI.

SC-1, 31 DEC 2020 to 28 JAN 2021

SC-1, 31 DEC 2020 to 28 JAN 2021