

RNAV (GPS) RWY 17C

APCH CRS 175°	Rwy Idg 9217 TDZE 1277 Arpt Elev 1307
------------------	--

AL-135 (USAF)

VANCE AFB (KEND)

T * When ALS inop, increase CAT AB RVR to 55 and vis to 1 mile, CAT CDE RVR to 60 and vis to 1 1/8 miles.
** Circling not authorized at night to RWY 35R.

SALS

MISSED APPROACH: Climb to 4000 direct ADOWS and hold.

ATIS★
115.4 263.15

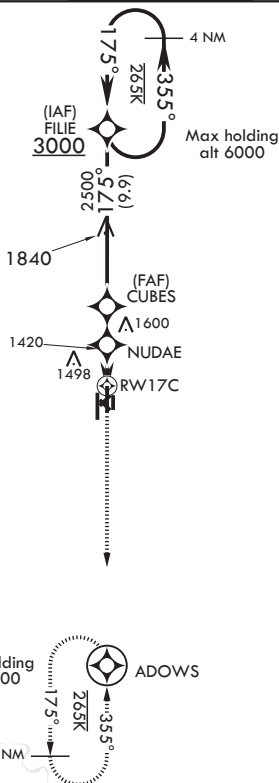
APP CON
125.45 388.2 EAST
126.75 346.325 WEST

TOWER★
24.05 259.1

GND CON
121.8 289.4

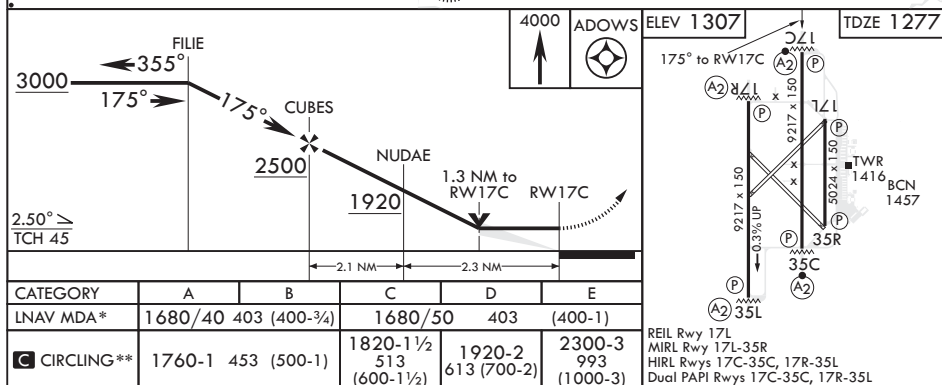
CLNC DEL
225.4

DME/DME RNP-0.3 NA



1608

EMERG SAFE ALT 100 NM 4800



ENID, OKLAHOMA

36°20'N - 97°55'W

VANCE AFB (KEND)

Amdt 8 15AUG19

RNAV (GPS) RWY 17C

SC-1, 31 DEC 2020 to 28 JAN 2021