

RNAV (GPS) RWY 35C

APCH CRS 355°	Rwy Idg 9217 TDZE 1293 Arpt Elev 1307
------------------	--

AL-135 (USAF)

VANCE AFB (KEND)

T * When ALS inop, increase CAT AB RVR to 55 and vis to 1 mile, CAT CDE RVR to 60 and vis to 1 1/8 miles.
** Circling not authorized at night to RWY 35R.

SALS

A2

MISSED APPROACH: Climb to 4000 direct FILIE and hold.

ATIS★
115.4 263.15

APP CON
125.45 388.2 EAST
126.75 346.325 WEST

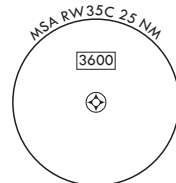
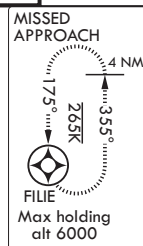
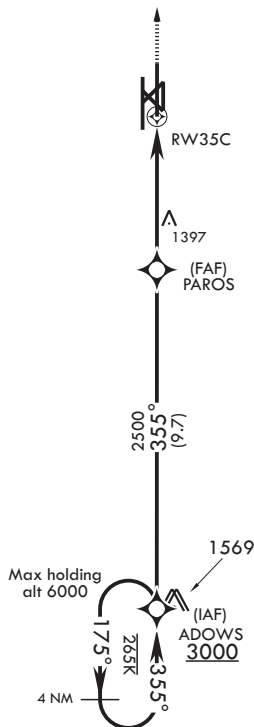
TOWER★
24.05 259.1

GND CON
121.8 289.4

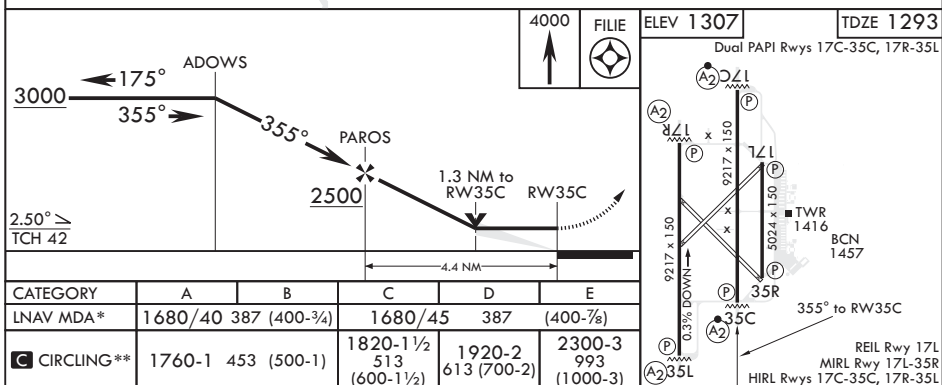
CLNC DEL
225.4

• 1385

DME/DME RNP-0.3 NA.



EMERG SAFE ALT 100 NM 4800



ENID, OKLAHOMA

36°20'N - 97°55'W

VANCE AFB (KEND)

Amdt 7 15AUG19

RNAV (GPS) RWY 35C

SC-1, 31 DEC 2020 to 28 JAN 2021