

APCH CRS 003°	Rwy Idg 9217 TDZE 1307 Arpt Elev 1307
------------------	--

AL-135 (USAF)

VANCE AFB (KEND)

T * When ALS inop, increase CAT AB vis to 1 mile, CAT CDE vis to 1 1/8 miles.
* Circling not authorized at night to Rwy 35R.

SALS	MISSED APPROACH: Climb to 1900, then climbing left turn to 4300 direct CERPA and hold.
------	--

ATIS★
115.4 263.15

APP CON
125.45 388.2 EAST
126.75 346.325 WEST

TOWER★
124.05 259.1

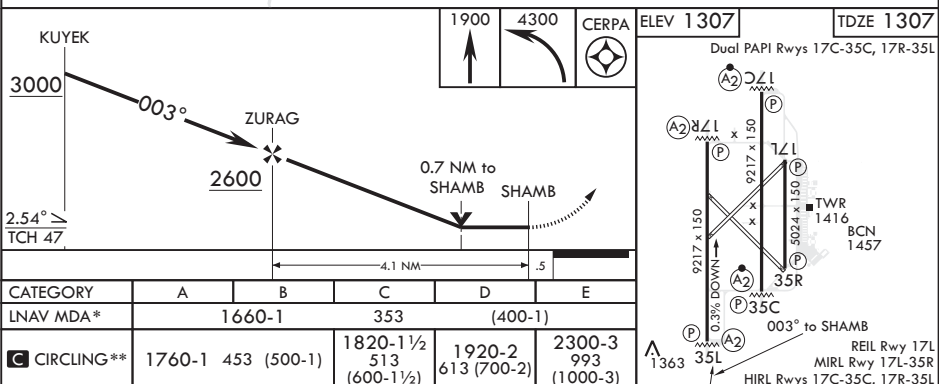
GND CON
121.8 289.4

CLNC DEL
225.4

1454
DME/DME RNP-0.3 NA

FOR USE BY 71TFW
AIRCRAFT ONLY

RADAR REQUIRED
EMERG SAFE ALT 100 NM 4800



ENID, OKLAHOMA

36°20'N - 97°55'W

VANCE AFB (KEND)

Amdt 5 15AUG19

RNAV (GPS) RWY 35L

SC-1, 31 DEC 2020 to 28 JAN 2021

SC-1, 31 DEC 2020 to 28 JAN 2021