

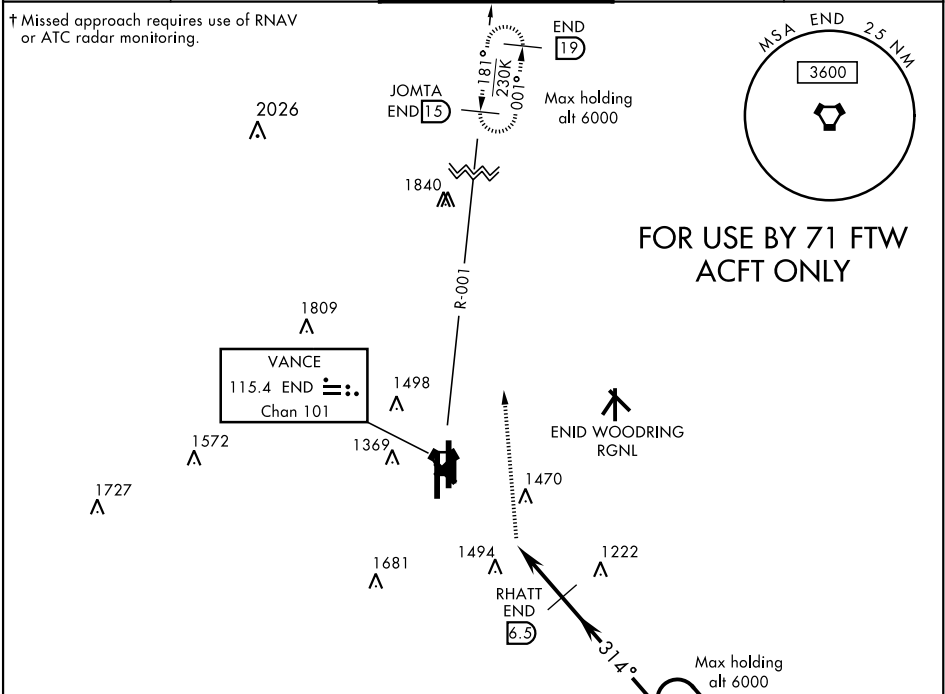
ENID, OKLAHOMA

VOR/DME-A

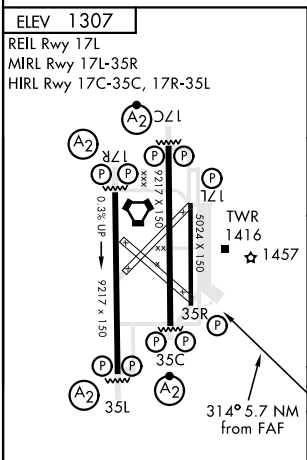
VORTAC END 115.4 Chan 101	APCH CRS 314°	Rwy Idg TDZE Arpt Elev N/A N/A 1307	AL-135 [USAF]	VANCE AFB (KEND)
---	-------------------------	---	---------------	------------------

▼ * Circle to remain East of Rwy 35R/17L extended centerline unless directed otherwise by ATC. Circling NA at night to Rwy 35R.	† MISSED APPROACH: Immediate climbing right turn to 4000 via heading 353° to JOMTA and hold.
---	--

ATIS ★ 115.4 263.15	VANCE APP CON 125.45 388.2 EAST 126.75 346.325 WEST	VANCE TOWER ★ 124.05 259.1	GND CON 121.8 289.4	CLNC DEL 225.4
-------------------------------	---	--------------------------------------	-------------------------------	--------------------------



EMERG SAFE ALT 100 NM 4800



4000	JOMTA END R-001 15	RHATT 6.5	TRHAP R-134 12	134°	3000
VORTAC	IPKE 4	2700	3000	314°	3000
3.2 NM	2.5 NM				
CATEGORY	A	B	C	D	E
✶ CIRCLING	1780-4	473 (500-4)	NOT AUTHORIZED		

ENID, OKLAHOMA

Amtd 4 06FEB14

36°20'N-97°55'W

VANCE AFB (KEND)

VOR/DME-A

SC-1, 31 DEC 2020 to 28 JAN 2021

SC-1, 31 DEC 2020 to 28 JAN 2021