


ENID, OKLAHOMA

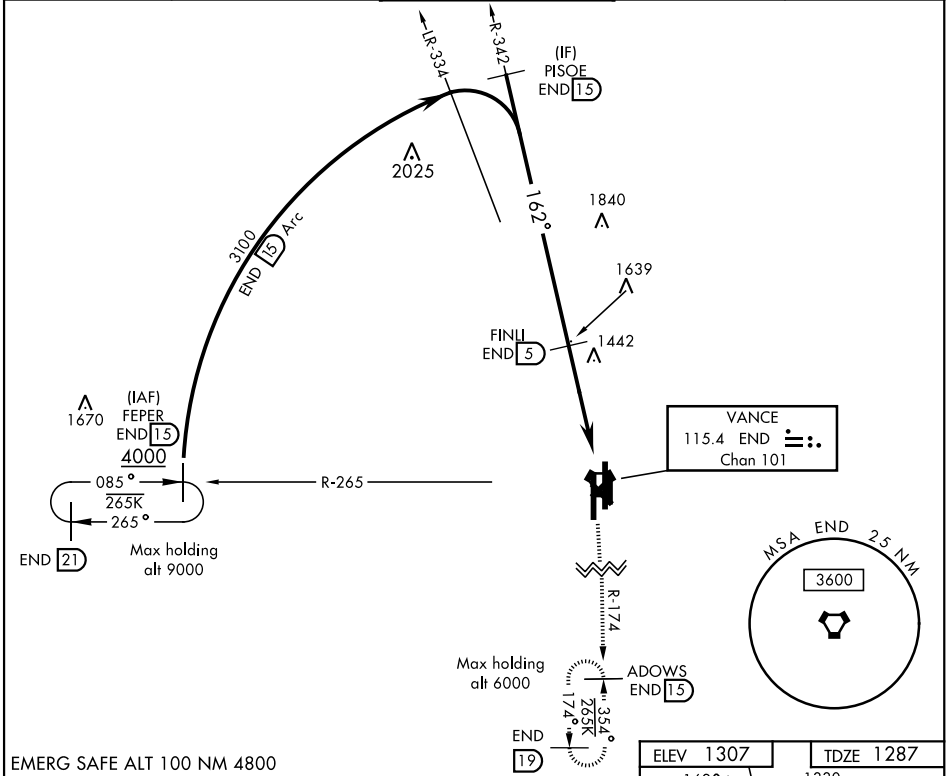
VOR/DME or TACAN RWY 17R

VORTAC END 115.4 Chan 101	APCH CRS 162°	Rwy Idg 9217 TDZE 1287 Arpt Elev 1307
---	-------------------------	--

AL-135 [USAF]

VANCE AFB (KEND)

▼ * When ALS inop, increase CAT CDE vis to 1 ¼ miles. ** Circling not authorized at night to Rwy 35R.	SALS	MISSED APPROACH: Climb to 4000, intercept END VORTAC R-174 to ADOWS and hold.			
	(A2) 				
ATIS ★ 115.4 263.15	VANCE APP CON 125.45 388.2 EAST 126.75 346.325 WEST	VANCE TOWER ★ 124.05 259.1		GND CON 121.8 289.4	CLNC DEL 225.4



CATEGORY	A	B	C	D	E
	1720-1	433	(500-1)		
S-17R *					
** CIRCLING	1760-1	453 (500-1)	1820-1½ 513 (600-1½)	1920-2 613 (700-2)	2300-3 993 (1000-3)

REIL Rwy 17L
MIRL Rwy 17L-35R
HIRL Rwy 17C-35C, 17R-35L

REIL Rwy 17L
MIRL Rwy 17L-35R
HIRL Rwy 17C-35C, 17R-35L

ENID, OKLAHOMA

36°20'N-97°55'W

VANCE AFB (KEND)

Amdt 4 12SEP19
TERPS

VOR/DME or TACAN RWY 17R

SC-1, 31 DEC 2020 to 28 JAN 2021

SC-1, 31 DEC 2020 to 28 JAN 2021