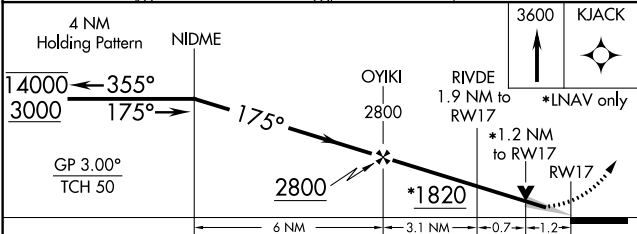
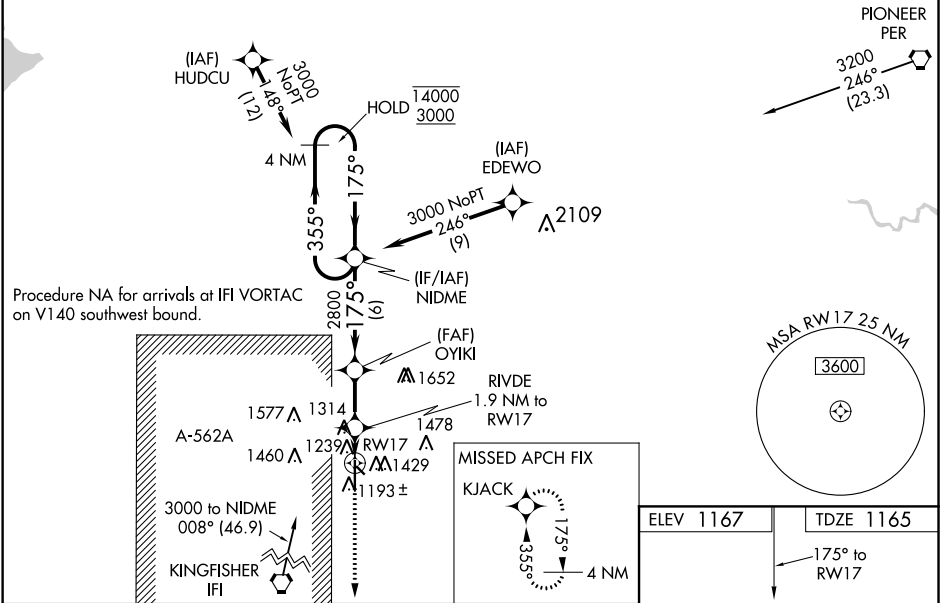


WAAS CH 50213 W17A	APP CRS 175°	Rwy Idg 8003 TDZE 1165 Apt Elev 1167
--	------------------------	---

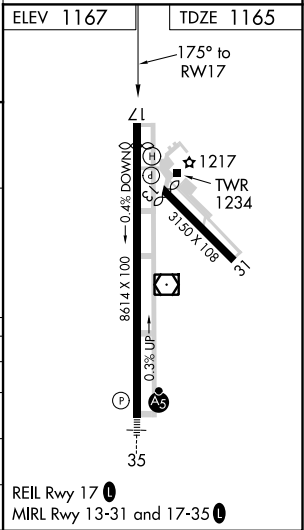
RNAV (GPS) RWY 17
ENID WOODRING RGNL (WDG)

RNP APCH.		MISSED APPROACH: Climb to 3600 direct KJACK and hold.	
AWOS-3 120.625	VANCE APP CON ★ 121.3 346.325	WOODRING TOWER ★ 118.9 (CTAF) 0 257.95	GND CON 121.925

Procedure NA for arrival on PER VORTAC
airway radials 173 CW 335.



CATEGORY	A	B	C	D	E
LPV DA	1415-3/4 250 (300-3/4)				
LNAV/VNAV DA	1415-3/4 250 (300-3/4)				
LNAV MDA	1580-1	415 (500-1)	1580-1 1/8	415 (500-1 1/8)	
CIRCLING	1760-1	593 (600-1)	1820-1 1/4	1880-2 1/4	2000-3



SC-1, 31 DEC 2020 to 28 JAN 2021

SC-1, 31 DEC 2020 to 28 JAN 2021