



VOR/DME ODG 109.0 Chan 27	APP CRS 357°	Rwy Idg 8614 TDZE 1147 Apt Elev 1167
---	------------------------	---

VOR RWY 35
ENID WOODRING RGNL (WDG)

	Circling Rwy 13 NA at night.		MISSED APPROACH: Climb to 3000 then right turn direct ODG VOR/DME and hold.
---	------------------------------	---	---

AWOS-3 120.625	VANCE APP CON ★ 121.3 346.325	WOODRING TOWER ★ 118.9 (CTAF) 0 257.95	GND CON 121.925
--------------------------	---	--	---------------------------

Δ 2037

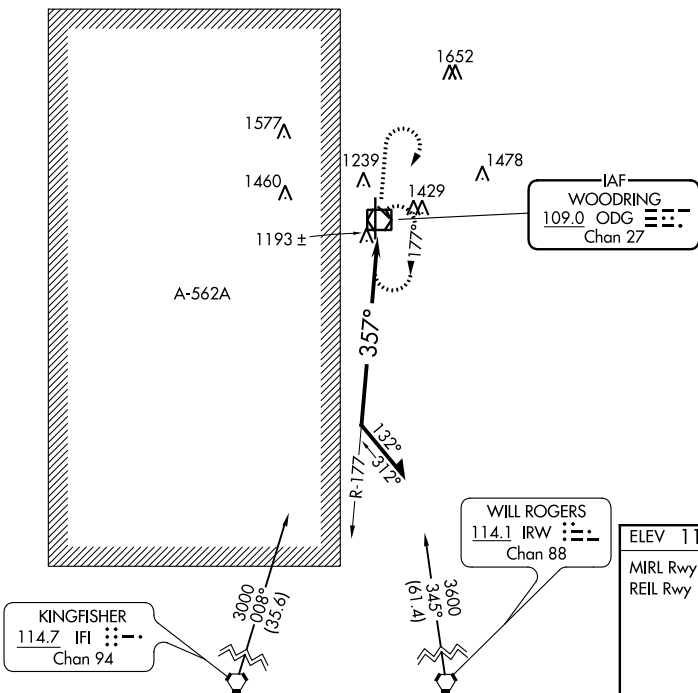


Diagram illustrating a circling approach for a Category C aircraft. The diagram shows a 3000 ft MSL circling minimum altitude, a 2800 ft MSL MDA, and a 1.5 NM radius. The approach is a 177° turn from the 2800 ft MDA to the 3000 ft MSL altitude, followed by a 357° turn to the final approach. The diagram also shows the ODG (Obstacle Data Group) and VOR/DME information.

SC-1, 31 DEC 2020 to 28 JAN 2021