

FORT SILL, OKLAHOMA

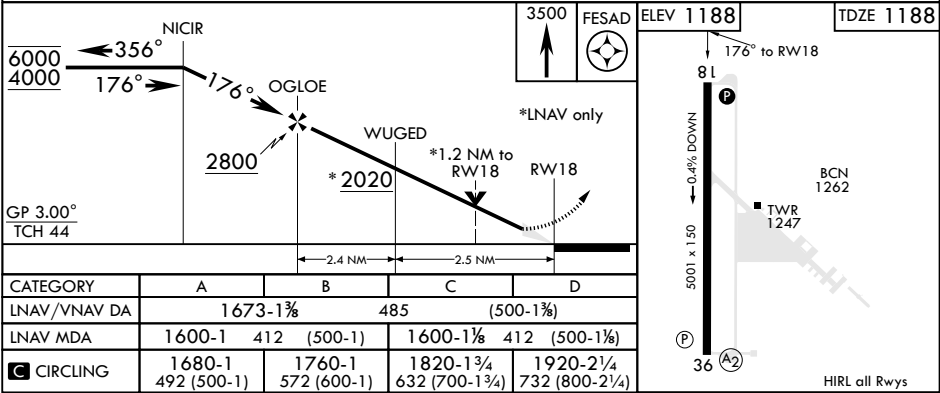
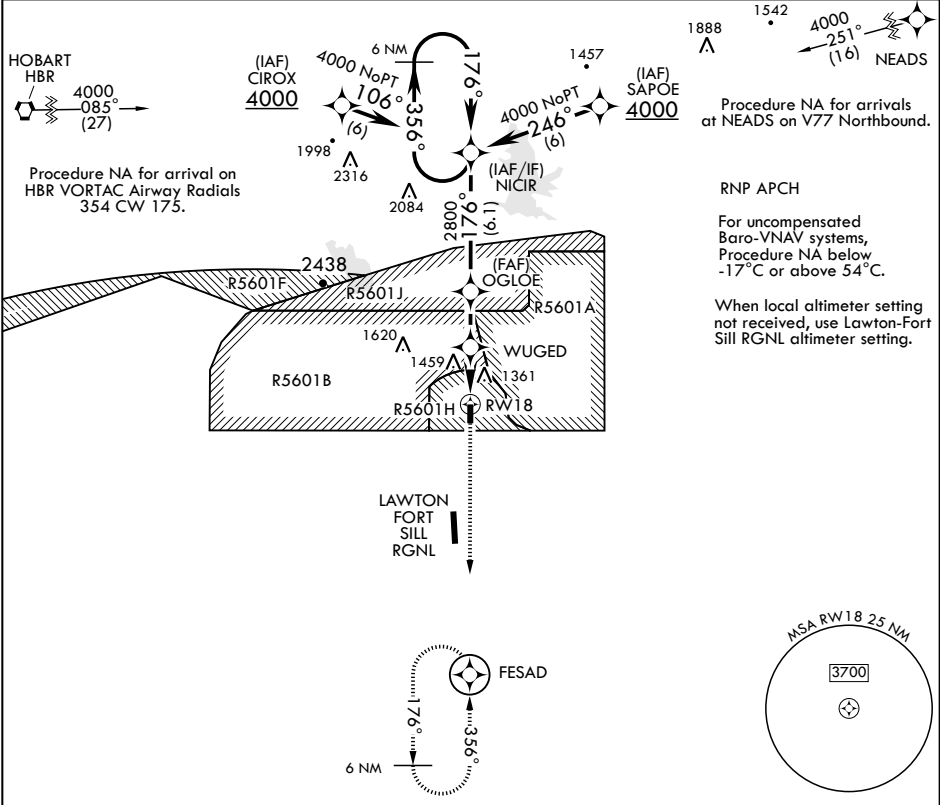
# RNAV (GPS) RWY 18

APCH CRS	Rwy Idg	5001
176°	TDZE	1188
	Arpt Elev	1188

AL-230 (USA)

HENRY POST AAF (KFSI)

		MISSED APPROACH: Climb to 3500 direct to FESAD and hold.			
ATIS	FORT SILL APP CON/DEP CON	TOWER ★	POST GND CON	CLNC DEL	ASR
135.425 354.025	120.55 322.4	124.95 (CTAF) 0★ 229.4	121.7 279.575	121.7 279.575	



FORT SILL, OKLAHOMA

34°39'N - 98°24'W

HENRY POST AAF (KFSI)

Amdt 1 20JUN19

# RNAV (GPS) RWY 18

SC-1, 31 DEC 2020 to 28 JAN 2021

SC-1, 31 DEC 2020 to 28 JAN 2021