

FORT SILL, OKLAHOMA

RNAV (GPS) RWY 36

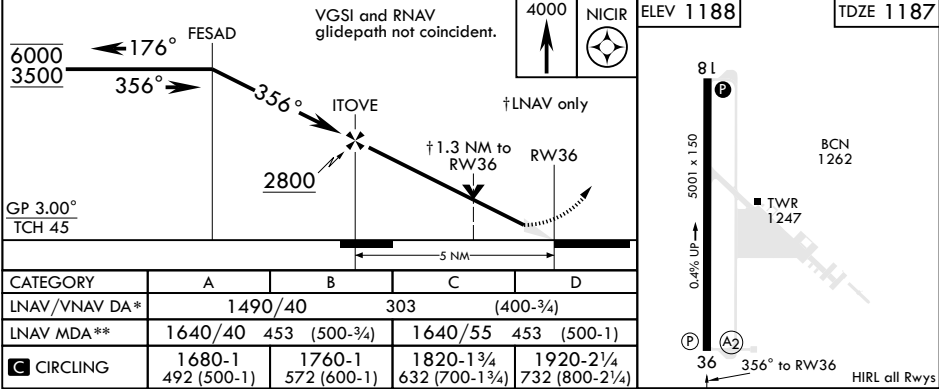
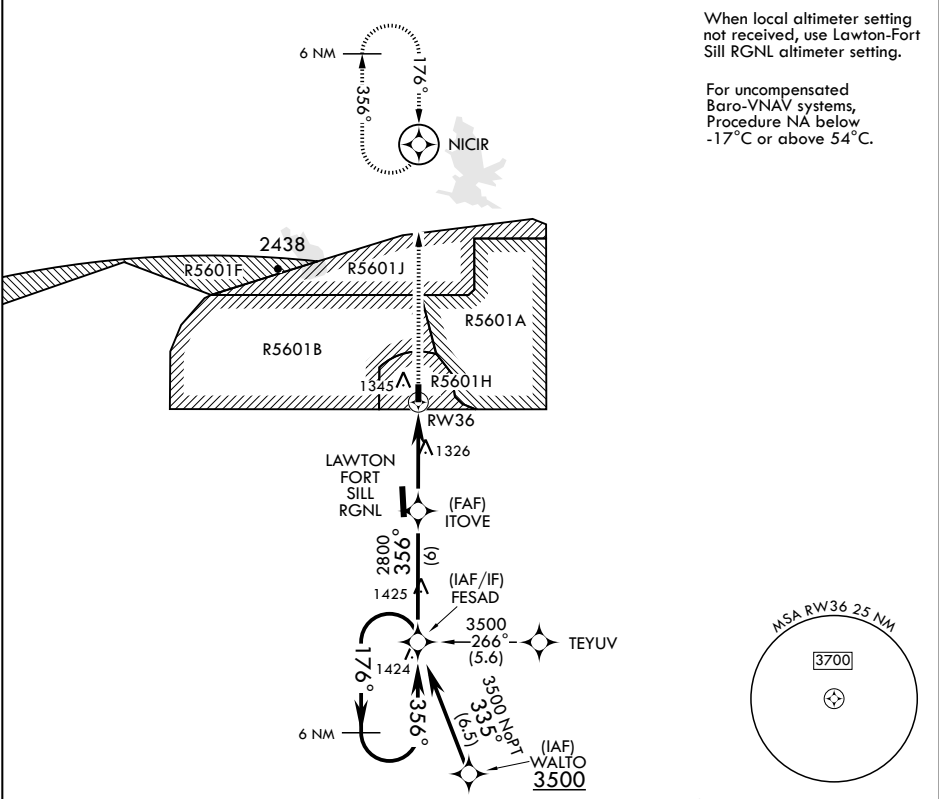
APCH CRS	Rwy Idg	5001
356°	TDZE	1187
	Arprt Elev	1188

AL-230 (USA)

HENRY POST AAF (KFSI)

<p>▼ * When ALS inop, increase vis CAT ABCD to RVR 45. ▲ ** When ALS inop, increase CAT CD vis to 1 3/8 SM.</p>	<p>SALS</p> 	<p>MISSED APPROACH: Climb to 4000 direct NICIR and hold.</p>
---	---	--

ATIS 135.425 354.025	FORT SILL APP CON/DEP CON 120.55 322.4	TOWER ★ 124.95 (CTAF) 0 229.4	POST GND CON 121.7 279.575	CLNC DEL 121.7 279.575	ASR
-------------------------	---	----------------------------------	-------------------------------	---------------------------	-----



FORT SILL, OKLAHOMA

34°39'N - 98°24'W

HENRY POST AAF (KFSI)

Amdt 1 20JUN19

RNAV (GPS) RWY 36

SC-1, 31 DEC 2020 to 28 JAN 2021

SC-1, 31 DEC 2020 to 28 JAN 2021