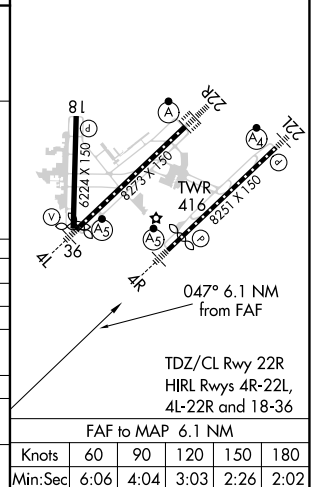




ILS or LOC RWY 4R  
BILL AND HILLARY CLINTON NATIONAL/ADAMS FIELD (LIT)

MISSED APPROACH: Climb to 800 then climbing right turn to 4000 on heading 110° and LIT VORTAC R-089 to ATERS INT/LIT 16 DME and hold.

[illegible]

CATEGORY	A	B	C	D
S-ILS 4R		510/40	250 (300-¾)	
S-LOC 4R	880/40	620 (700-¾)	880-1⅓	620 (700-1⅓)
 CIRCLING	880-1 614 (700-1)	1000-1 734 (800-1)	1180-2¾ 914 (1000-2¾)	1180-3 914 (1000-3)
OGRAY (DUAL VOR RECEIVERS OR DME REQUIRED)				
S-LOC 4R	780/40	520 (600-¾)	780/55	520 (600-1)
 CIRCLING	820-1 554 (600-1)	1000-1 734 (800-1)	1180-2¾ 914 (1000-2¾)	1180-3 914 (1000-3)

SC-1, 31 DEC 2020 to 28 JAN 2021