

## HI-ILS or LOC/DME Y RWY 18

LOC I-FRJ  
111.3

APCH CR  
177 °

Rwy Idg	11,100
TDZE	1267
Arpt Elev	1291

JAL-299 [USAF]

TINKER AFB (KTIK)

**T** \* When ALS inop, increase CAT CDE RVR to 55 and vis to 1 mile.  
\*\* CAT E circling NA in sector S of Rwy 13-31 and W of RWY 18. Circling NA to Rwy 18.

SALS

**MISSED APPROACH:** Climb to 4000 on  
TIK TACAN R-179 to NIDUE and hold.

ATIS ★  
270.1

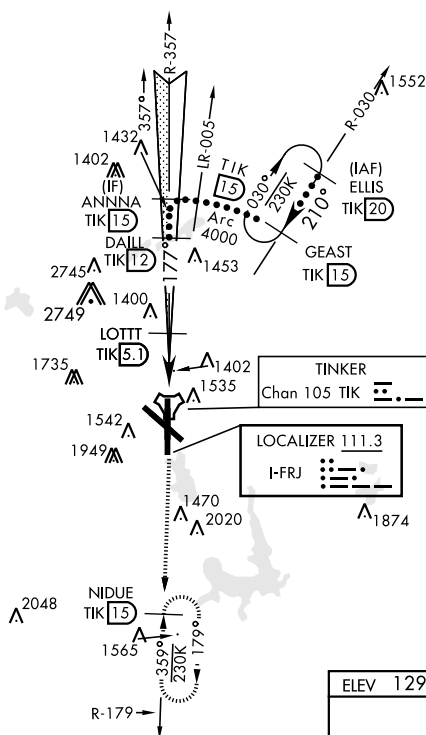
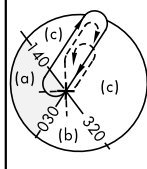
124.2 336.4

TINKER TOWER  
124.45 251.05

GND CON  
121.8 275.8

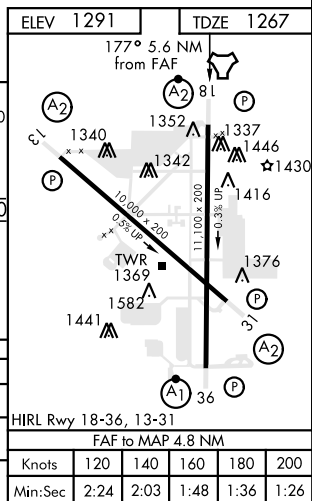
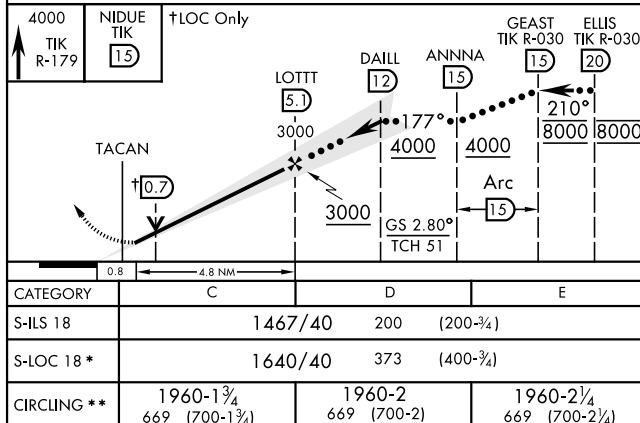
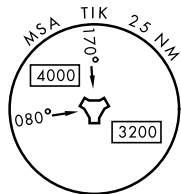
CLNC DEL  
119.7 335.8

ASR



Localizer unusable from TIK 0.1 DME to  
rwy threshold.  
Localizer NA beyond 15° right of course.

EMERG SAFE ALT 100 NM 4700



OKLAHOMA CITY, OKLAHOMA

35°25'N-97°23'W

TINKER AFB (KTIK)

Amdt 6 23APR20

## HI-ILS or LOC/DME Y RWY 18